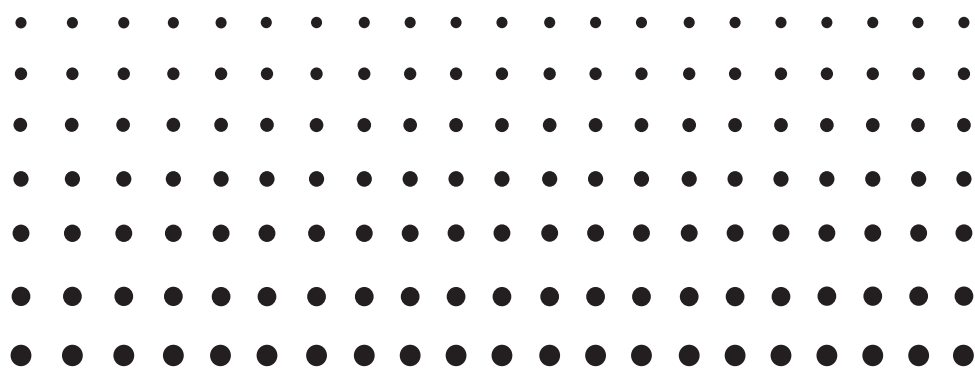


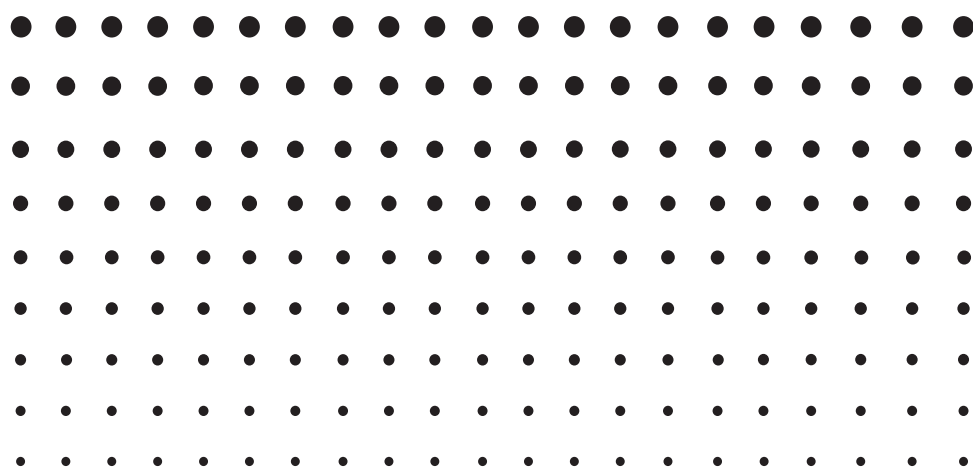
For fx-9860G Series

E



Installing an Add-in Application

User's Guide



CASIO Worldwide Education Website

<http://edu.casio.com>

CASIO EDUCATIONAL FORUM


<http://edu.casio.com/forum/>

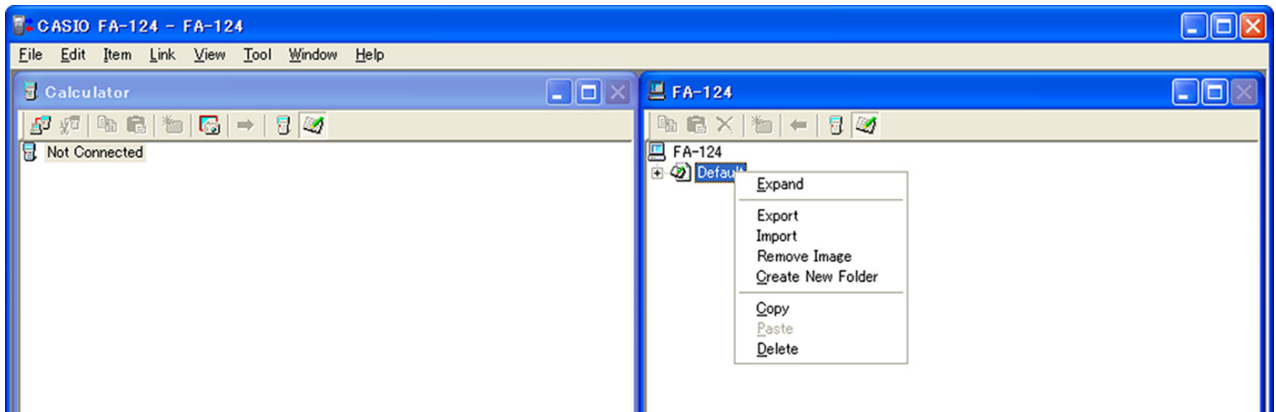
CASIO®

Contents

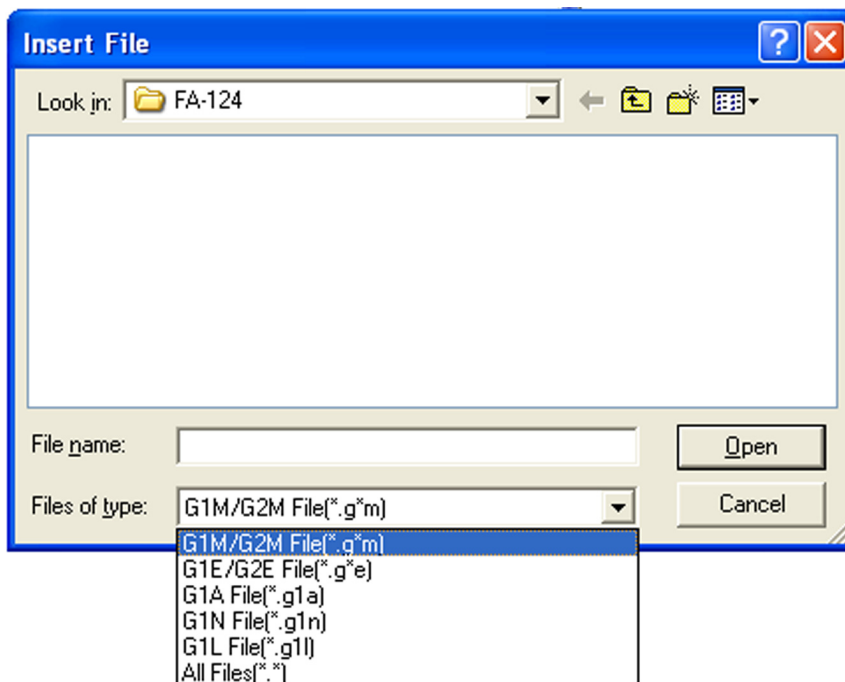
Installing an Add-in Application Using FA-124 PROGRAM-LINK.....	E-2
Installing an Add-in Application Using an SD Card	E-5

Installing an Add-in Application Using FA-124 PROGRAM-LINK

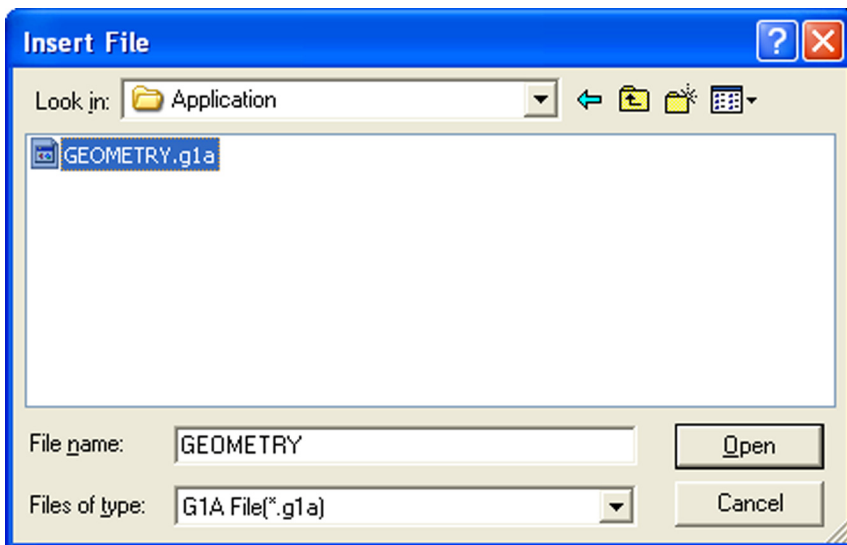
1. On your computer's desktop, double-click "FA-124".
 - This will start up FA-124 PROGRAM-LINK.
2. Click the  icon to switch to display of Storage Memory contents.
3. In the FA-124 window, right click "Default".



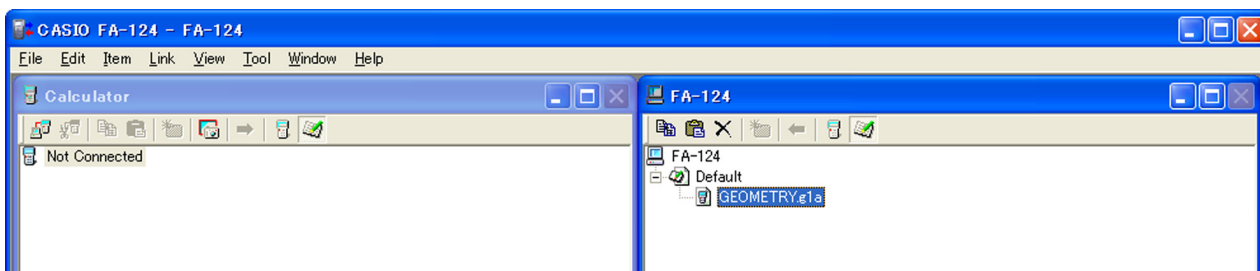
4. On the shortcut menu that appears, select "Import".
 - This will display a dialog box for selecting the file you want.
5. Click the file type down arrow button and then select "G1A File(*.g1a)" on the list of file types that appears.




6. Select the add-in that you want to install.
- If you are installing an add-in from the CD-ROM (Physium, Geometry, etc.), navigate to the CD-ROM that is in your computer's CD-ROM drive and then select the add-in.



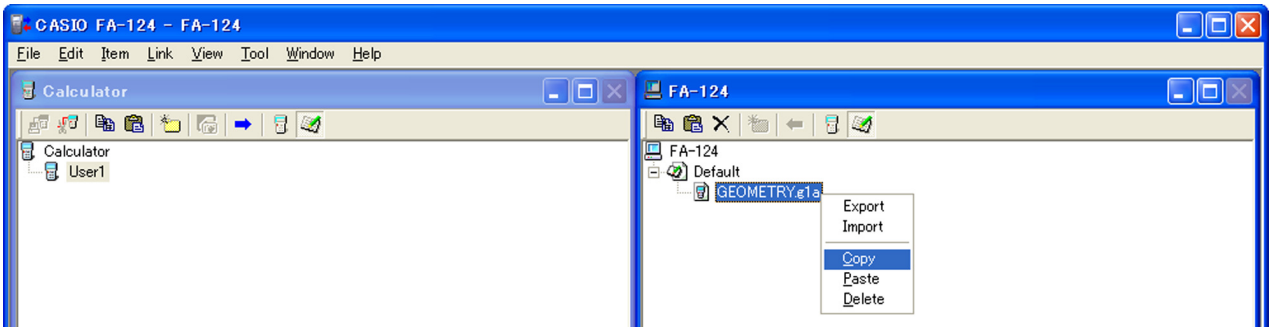
7. Click [Open].
- This should cause the imported add-in file to appear in the FA-124 window.



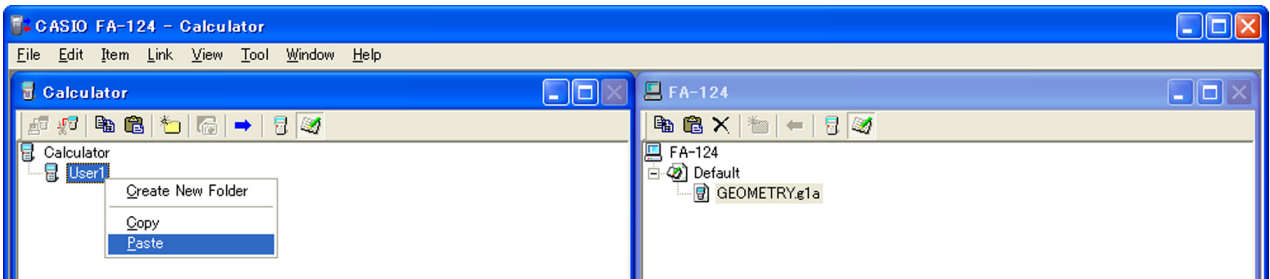
* If the "Memory Full Error" occurs, delete files in the FA-124 window that you no longer need.

8. Use the USB cable to connect the calculator to your computer.
- This will display a dialog box on the calculator screen.
9. Press **[F1]** (Data Transfer).
- If the connection is broken for some reason, press **[F2]** (RECV) to display the "Receiving..." screen.
10. Click the  icon.
- This will establish a connection between the calculator and FA-124 PROGRAM-LINK, and display the contents of calculator memory in the Calculator window.

11. In the FA-124 window, right-click the add-in application you want to install and then click “Copy” on the shortcut menu that appears.

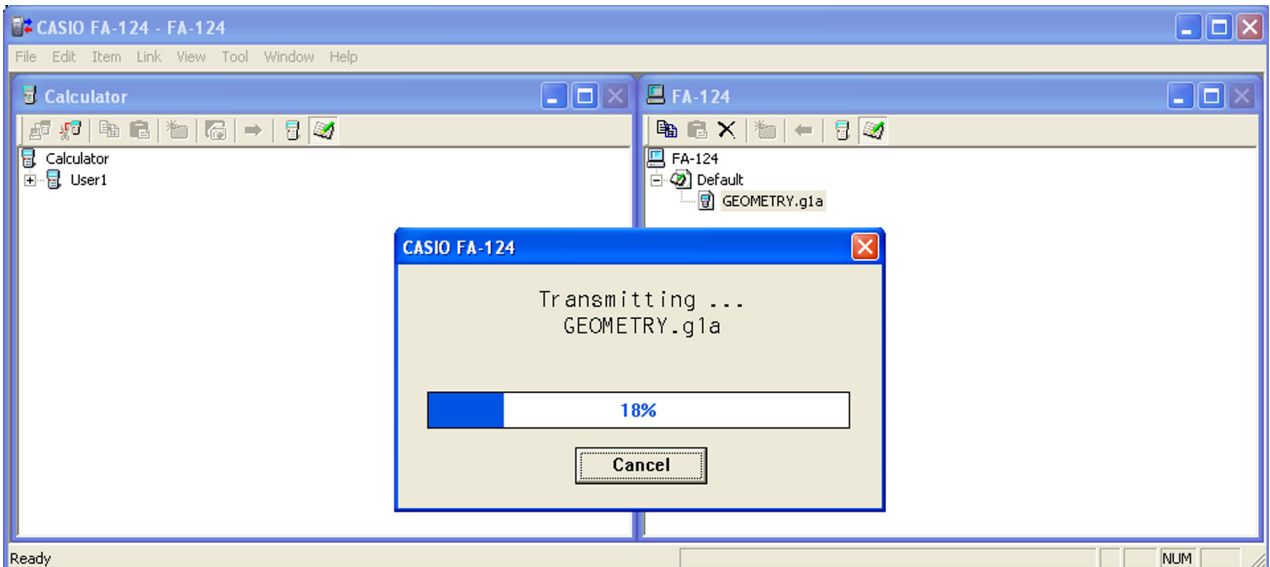


12. In the Calculator window, right-click the user name and then select “Paste” on the shortcut menu that appears.

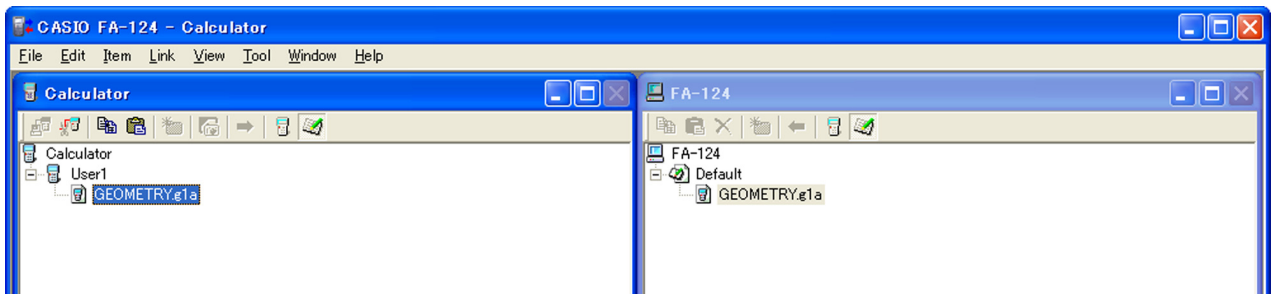



* In place of steps 11 and 12, you could also drag the add-in application from the FA-124 window and drop it onto the user name in the Calculator window.

13. The data will be copied from the FA-124 window to the Calculator window.



14. After the copy operation is complete, the add-in application will appear under the user name in the Calculator window.



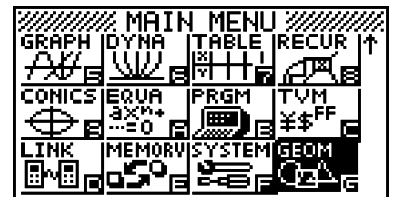
15. Click the  icon.

- This will terminate the connection between the calculator and FA-124 PROGRAM-LINK and cause the message “Complete!” to appear on the calculator display.



16. On the calculator, press the [EXIT] key and then the [MENU] key.

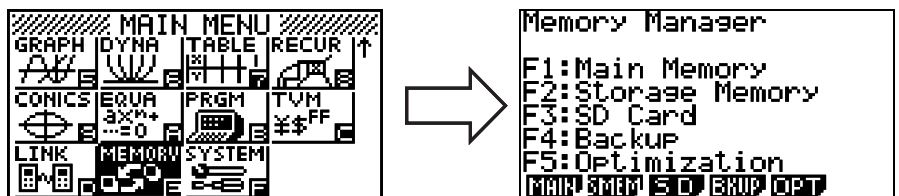
- Confirm that the add-in application’s icon is on the Main Menu.



Installing an Add-in Application Using an SD Card

* This operation is supported only on models equipped with SD card capabilities.

1. Insert the SD card into an SD card drive connected to your computer.
2. Copy the add-in file (*g1a) you want to install to the SD card.
3. Insert the SD card that contains the add-in file into the calculator.
4. Enter the MEMORY Mode.



5. Press **F3** (SD).
 • This will display the data stored on the SD card.



6. Use the **▲** and **▼** cursor keys to move the highlighting to the add-in application you want to install.



7. Press **F1** (SEL).
 • This will cause **▶** to appear to the left of the file.



8. Press **F2** (COPY).
 • This will display the “Copy to” dialog box.



9. Press **2** (Storage Mem).



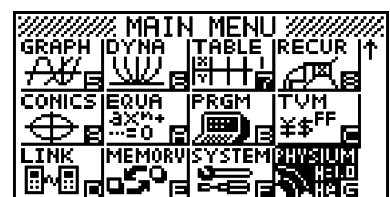
10. In Storage Memory, select ROOT as the destination and then press the **EXE** key.
 • This will cause the “Complete!” message to appear.



11. Press the **EXIT** key.

12. Press the **MENU** key.

- Confirm that the add-in application’s icon is on the Main Menu.



CASIO®

CASIO COMPUTER CO., LTD.

6-2, Hon-machi 1-chome
Shibuya-ku, Tokyo 151-8543, Japan

SA0902-C