



# *Screen Receiver*

*for fx-CG10 Series/fx-CG20 Series/  
fx-CG50 Series/GRAPH90+ E  
fx-9860GIII/fx-9750GIII  
GRAPH35+ E II  
ClassPad 330 PLUS  
ClassPad II  
fx-CG500  
fx-CG100/fx-1AU GRAPH/GRAPH MATH+*  
(for Windows and Mac)

## *User's Guide*



CASIO Worldwide Education Website

<https://edu.casio.com>

Manuals are available in multi languages at

<https://world.casio.com/manual/calc/>

# Getting Started

## ■ About Screen Receiver

- Screen Receiver provides the following functions.
  - Display of calculator screen images on a computer connected via a USB cable
  - Real-time display of calculation operation results
  - Zooming of display contents
  - Capture of screen contents
  - Copy and paste of captured screen images to other applications
  - Storage of captured screen images as image files
  - Printing of captured screen images

## ■ Using This Manual

- In this manual, different calculator models are referred to as shown below.
  - Type A Calculator: fx-CG10 Series, fx-CG20 Series, fx-CG50 Series, GRAPH90+ E, fx-9860GIII, fx-9750GIII, GRAPH35+ E II
  - Type B Calculator: ClassPad 330 PLUS
  - Type C Calculator: ClassPad II, fx-CG500
  - Type D Calculator: fx-CG100, fx-1AU GRAPH, GRAPH MATH+
- The procedures in this manual assume that you are already familiar with the following standard computer operations.
- Menu operations using the mouse, including: clicking, double-clicking, dragging, etc.
  - Text input using the keyboard
  - Icon operations, general window operations, etc.
  - If you are not familiar with these types of operations, refer to the user documentation for your computer.
- The explanations in this manual cover both Windows and macOS. Most of the screen shots are from Windows 8.1, but operational procedures are virtually identical for both Windows and macOS.
- Note that the actual appearance of the screen that appears when using this software depends on your computer system setup and on the operating system you are using.
- Screen shots shown in this User's Guide are intended for illustrative purposes only. The actual text and values that appear on display may differ from the examples shown in this User's Guide.
- This manual explains Screen Receiver operations using a Type A Calculator. Screen Receiver operations are identical when using a Type B, Type C or Type D Calculator.

## ■ System Requirements

### Windows

Operating Systems:

Refer to the website at the URL below:  
<https://s.casio.jp/c/11440en/>

Computer: Computer with one of the Windows operating systems pre-installed (Excluding computers with an upgraded operating system and self-built computers.)

Disk Space: 100MB for installation and uninstall

Note: Actual requirements and product functionality may vary based on your system configuration and operating system.

Other: USB port for direct connection. Do not connect via a USB hub.  
Video adapter and display must support resolution of XGA (1024×768) or higher, 16 bit or higher system color.

### macOS

Operating Systems:

Refer to the website at the URL below:  
<https://s.casio.jp/c/11457en/>

Disk Space: 100MB for installation and uninstall

Note: Actual requirements and product functionality may vary based on your system configuration and operating system.

Other: USB port for direct connection. Do not connect via a USB hub.  
Video adapter and display must support resolution of XGA (1024×768) or higher.  
For Retina display, use of the Low Resolution mode is recommended.

### Note

- For the latest information about system requirements, visit the website at the URL below:  
[https://world.casio.com/support/os\\_support/](https://world.casio.com/support/os_support/)
- Windows is a registered trademark or trademark of Microsoft Corporation in the United States and/or other countries.
- Mac, macOS and Retina are registered trademarks or trademarks of Apple Inc. in the United States and/or other countries.
- Adobe and Reader are either registered trademarks or trademarks of Adobe Systems Incorporated in the United States and/or other countries.
- Company and product names used herein are trademarks of their respective owners.
- Note that trademark <sup>™</sup> and registered trademark <sup>®</sup> are not used within the text of this user's guide.

# Contents

<b>1. Installing and Uninstalling Screen Receiver .....</b>	<b>4</b>
<b>2. Screen Configuration .....</b>	<b>6</b>
Menu Bar .....	10
Status Bar .....	14
<b>3. Using Screen Receiver.....</b>	<b>15</b>
3-1 Establishing a Connection between Screen Receiver and a Calculator .....	15
3-2 Calculation Operation Precaution .....	17
3-3 Capturing the Calculator Screen .....	17
3-4 Making a Captured Data Window Active .....	18
3-5 Copying Captured Data Window Contents to the Clipboard .....	18
3-6 Saving Captured Data .....	18
3-7 Auto File Save.....	19
3-8 Resizing a Screen Image .....	19
3-9 Using a Floating Calculator Screen (Windows only) .....	21
3-10 Printing.....	22
3-11 Shortcut Menu.....	24
<b>4. Tool Options Dialog Box .....</b>	<b>25</b>
4-1 File Save Settings .....	25
4-2 Capture Settings .....	25
<b>5. Error Message Table .....</b>	<b>26</b>

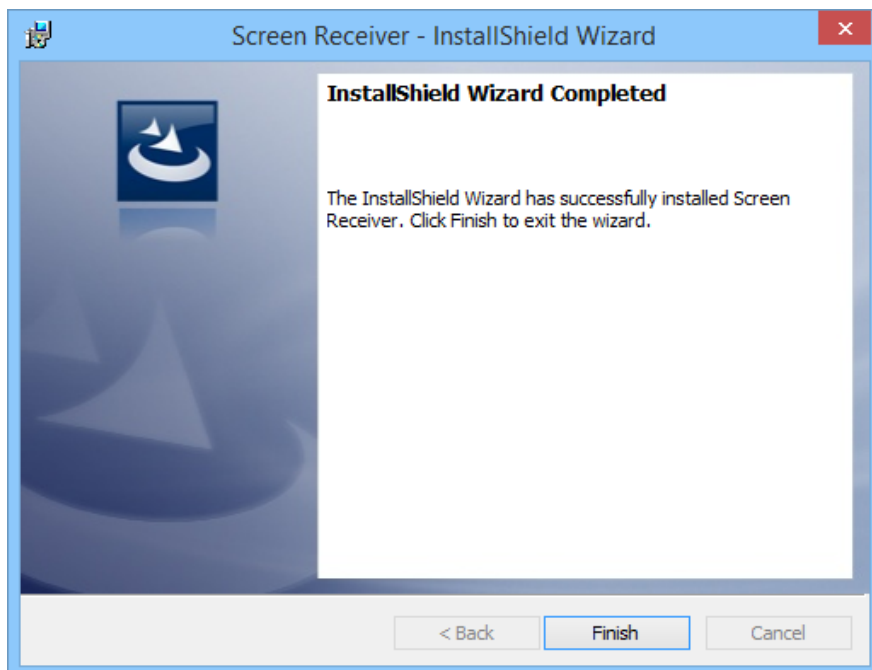
# 1. Installing and Uninstalling Screen Receiver

This section explains how to install and uninstall Screen Receiver.

## To install Screen Receiver

### Note

- Do not install Screen Receiver into a folder that is used by other software.
1. On your computer, double-click the Screen Receiver application EXE file.
  2. Perform operations as instructed by the text that appears on the screen.
  3. The dialog box shown below will appear when installation is complete.



4. Click the [Finish] button.
  - This completes installation.

### Note

- Installing the software will put a “Screen Receiver” shortcut icon on your desktop.

## To uninstall Screen Receiver

### Windows

1. Display the Windows Control Panel.
2. Click [Programs and Features].
3. On the list of applications that appears, select “Screen Receiver”.
4. Click the [Uninstall] button.
  - This will display the program maintenance wizard.
5. Click the [Yes] button.
  - This completes the uninstall operation.

### macOS

1. Move Screen Receiver(.app) to the Trash folder.
2. From the menu, select [Finder] and then [Empty Trash].

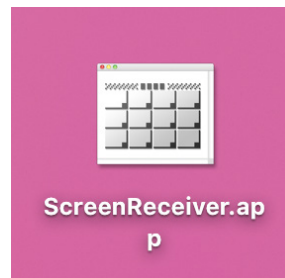
## To start up Screen Receiver

1. Windows: On your computer’s desktop, double-click the “Screen Receiver” icon.  
macOS: In the “Applications” - “CASIO” folder, double-click “Screen Receiver”.
  - Windows: You could also start up the application by clicking [Start] - [Program] - [CASIO] - [Screen Receiver] - [Screen Receiver].

### Windows



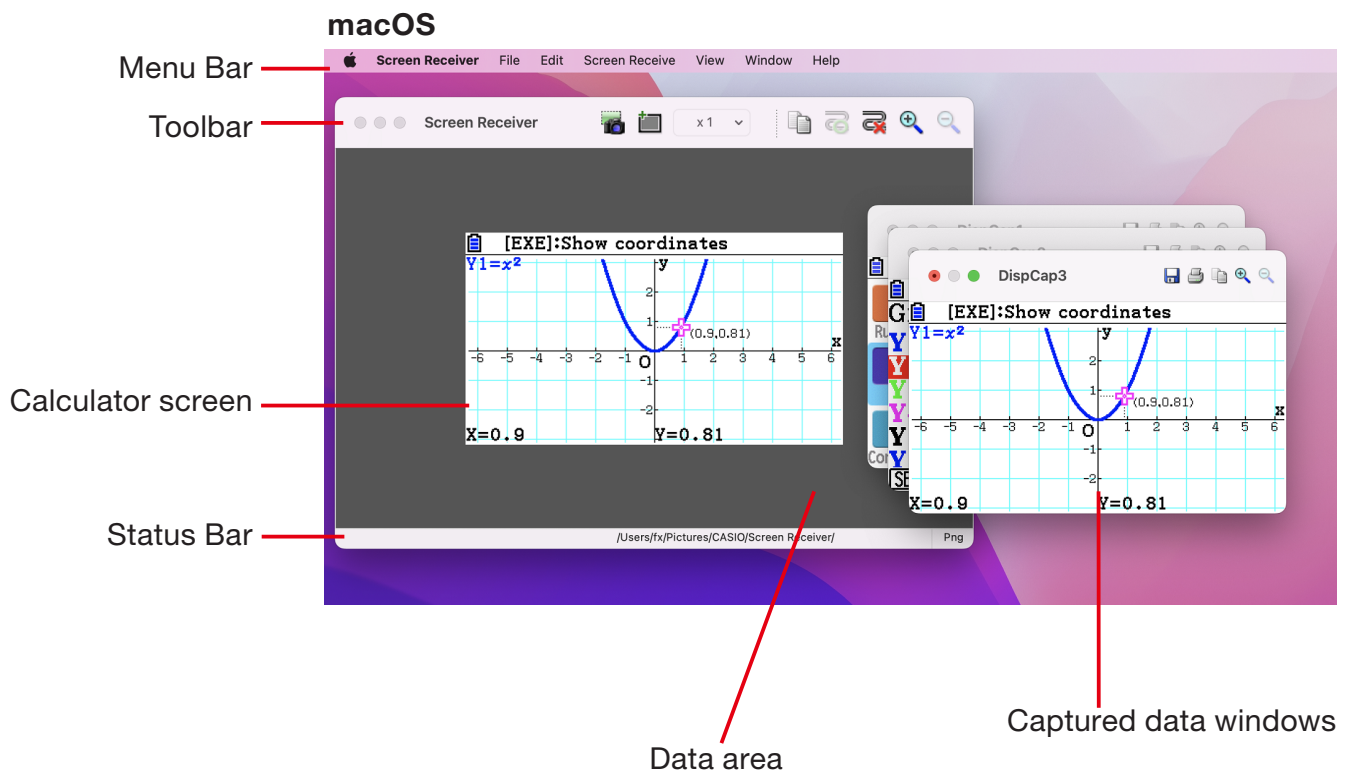
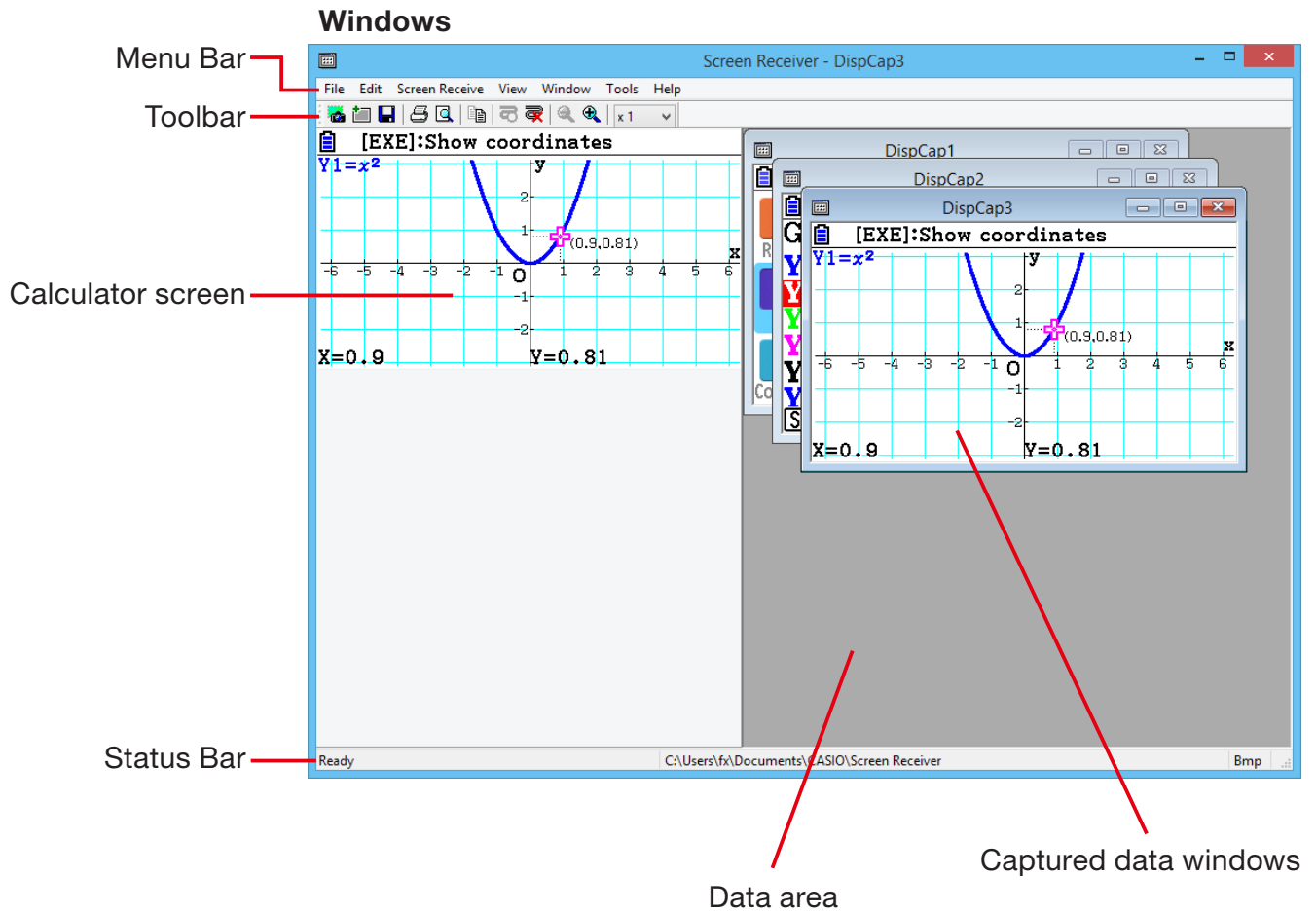
### macOS



# 2. Screen Configuration

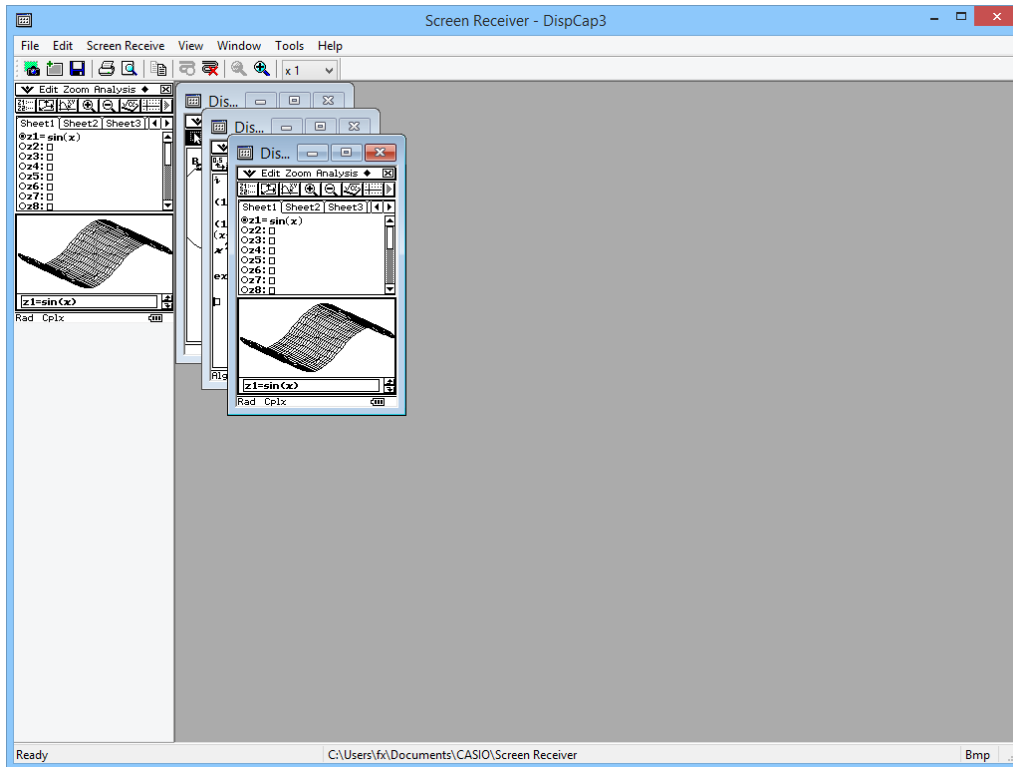
The following shows the Screen Receiver screen.

## ■ When connected to a Type A Calculator

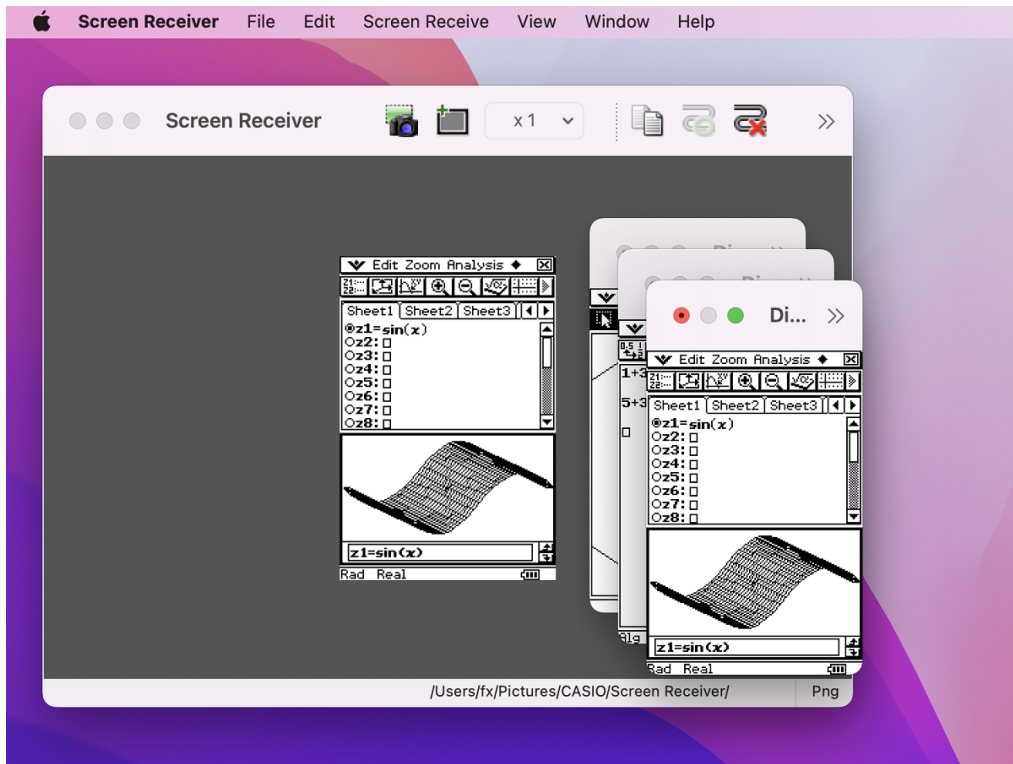


# ■ When connected to a Type B Calculator

## Windows

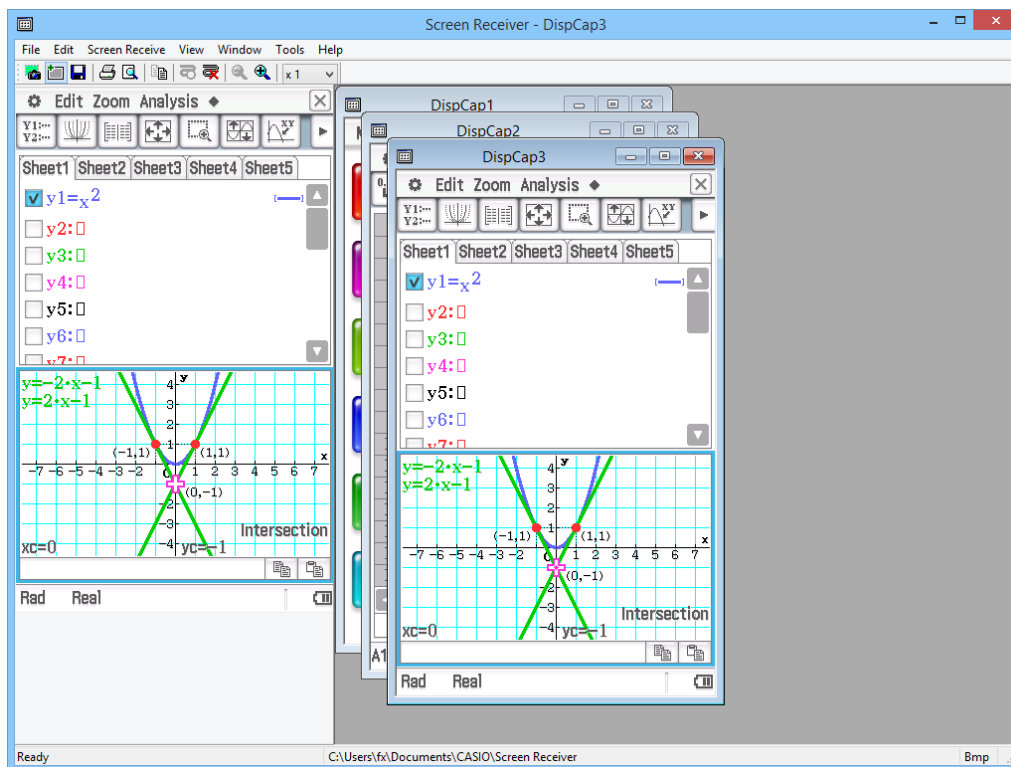


## macOS

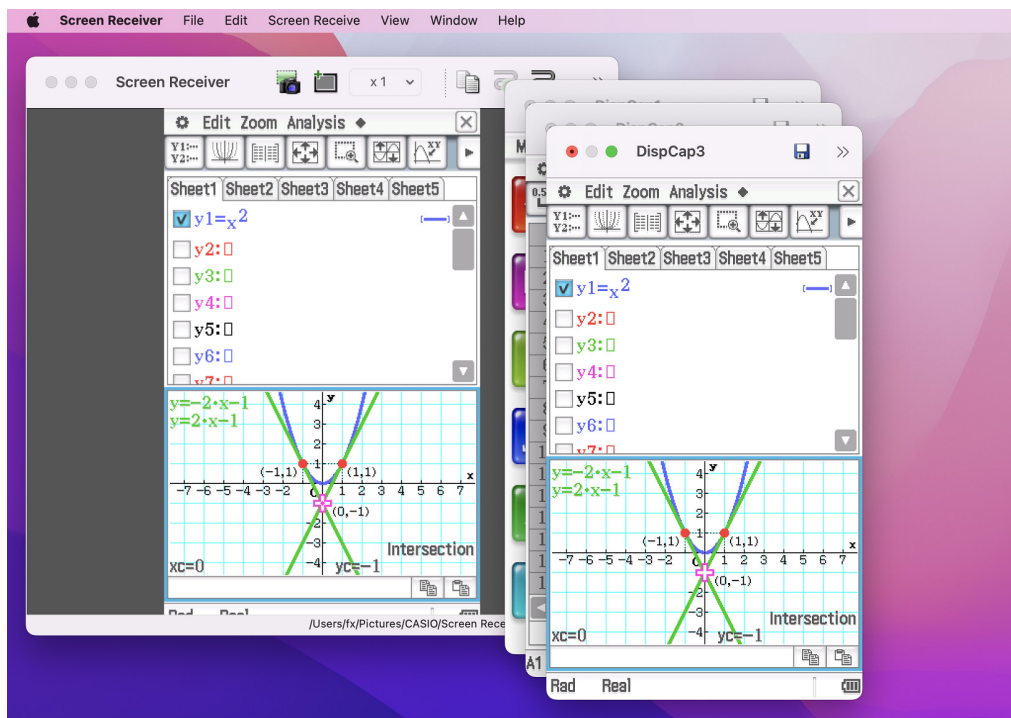


# ■ When connected to a Type C Calculator

## Windows

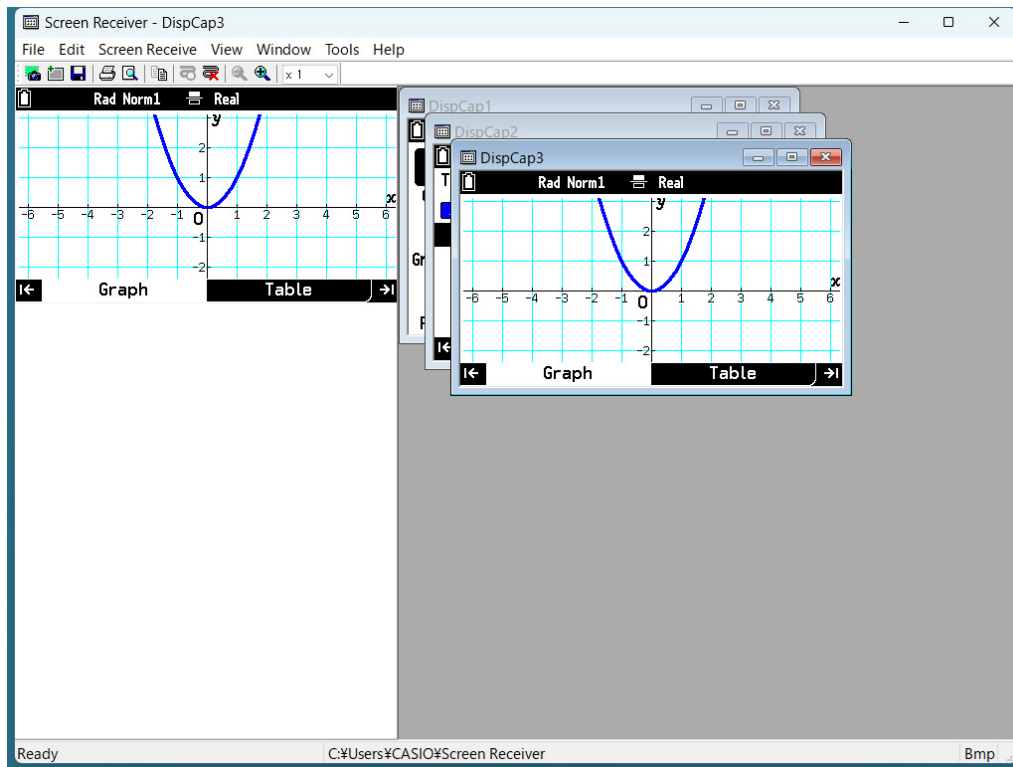


## macOS

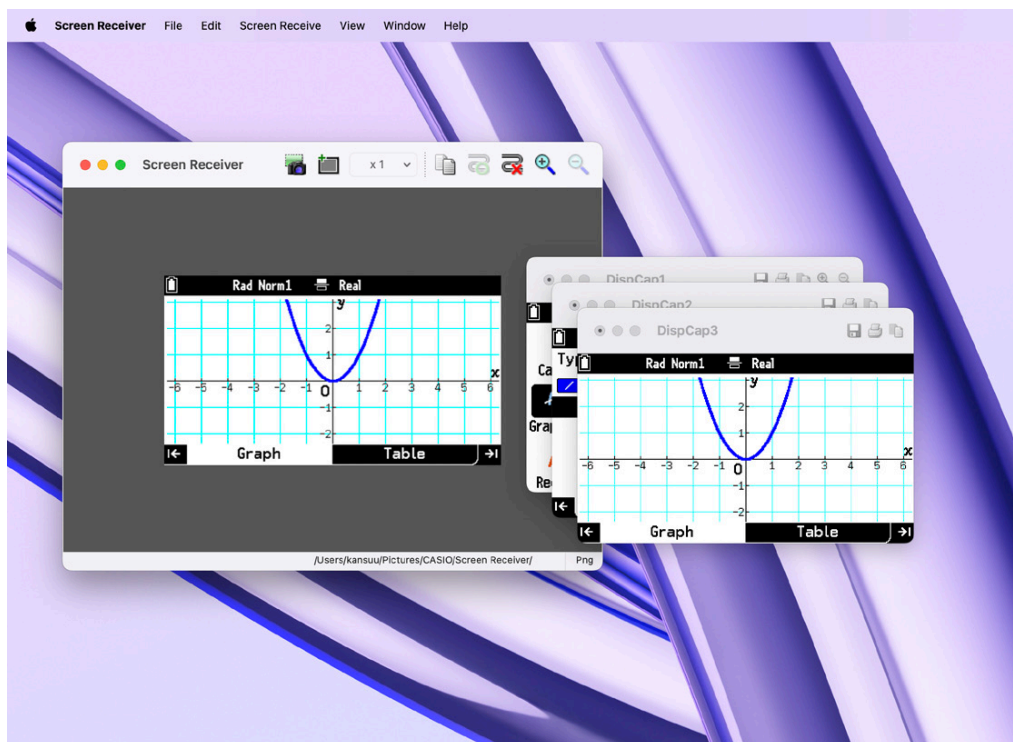


# ■ When connected to a Type D Calculator

## Windows



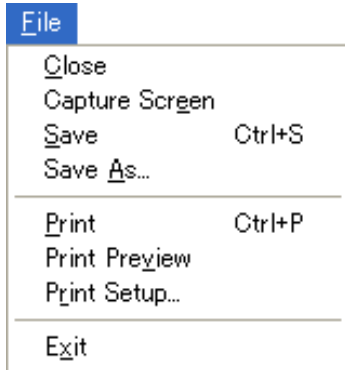
## macOS







# Menu Bar

- This section explains the Screen Receiver menu bar.
- If a menu command can also be executed by clicking a toolbar button, the applicable toolbar button is also provided.

## ■ File Menu

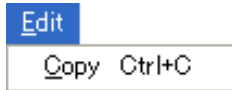



Menu	Toolbar Button	Description
Close		Closes the active captured data window.
Capture Screen		Captures the calculator screen. Each capture adds a capture screen to the captured data area.
Save		Saves the contents of the active data capture window, overwriting the existing data.
Save As		Saves the contents of the active data capture window under a new file name.
Print		Prints the contents of the active captured data window.
Print Preview* <sup>1</sup>		Displays a preview of the print image.
Print Setup		Displays the print setup dialog box.
Exit* <sup>2</sup>		Exits Screen Receiver.

\*<sup>1</sup> Windows only

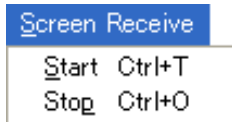
\*<sup>2</sup> macOS: On the [Screen Receiver] menu, selected [Quit Screen Receiver].



## ■ Edit Menu



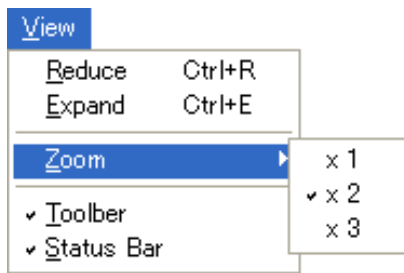
Menu	Toolbar Button	Description
Copy		Copies the contents of the active captured data window to the clipboard.



## ■ Screen Receive Menu



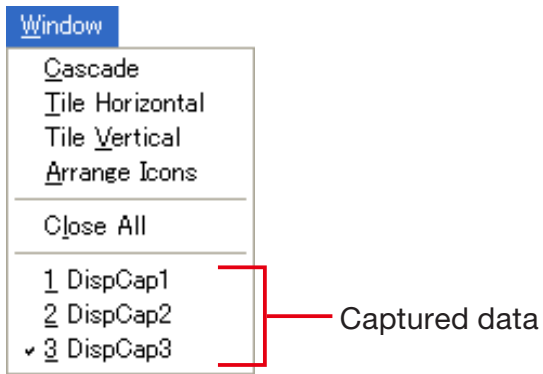
Menu	Toolbar Button	Description
Start		Establishes a connection between Screen Receiver and calculator and displays the calculator screen contents.
Stop		Terminates the connection between Screen Receiver and the calculator.

## ■ View Menu



Menu	Submenu	Toolbar Button	Description
Reduce			Reduces the size of contents of the active captured data window.
Expand			Expands the size of the contents of the active captured data window.
Zoom	x 1		Displays the contents of the active captured data window in its actual size.
	x 2		Displays the contents of the active captured data window as 2X its actual size.
	x 3		Displays the contents of the active captured data window as 3X its actual size.
Toolbar			Toggles display of the toolbar on and off.
Status Bar			Toggles display of the status bar on and off.

## ■ Window Menu



Menu	Description
Cascade	Stacks captured data windows.
Tile Horizontal* <sup>1</sup>	Lines up captured data windows horizontally.
Tile Vertical* <sup>1</sup>	Lines up captured data windows vertically.
Arrange Icons	Displays captured data windows as icons.
Close All	Closes the all captured data windows.
(Captured data)	Make the selected captured data window active.

\*<sup>1</sup> Windows only

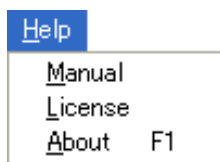
## ■ Tools Menu (Windows only)



Menu	Description
Options* <sup>1</sup>	Displays a dialog box for configuring optional settings.

\*<sup>1</sup> macOS: This menu item is not available in macOS. To do the same operation, select [Settings...] and then display the Preferences popup.

## ■ Help Menu



Menu	Description
Manual* <sup>1</sup>	Displays the Screen Receiver User's Guide.
License	Displays the end user license agreement.
About* <sup>2</sup>	Displays version information.

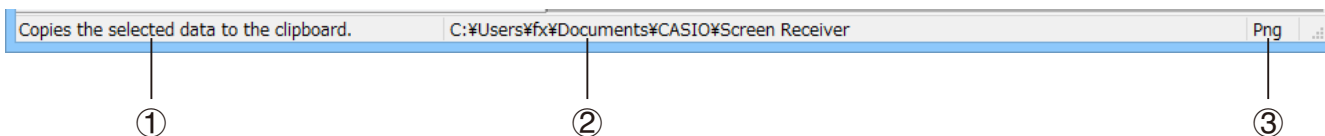
\*<sup>1</sup> The User's Guide that opens when you select this menu item is an older version. For the latest version of the User's Guide, visit the website below.

<https://world.casio.com/manual/calc/>

\*<sup>2</sup> macOS: On the [Screen Receiver] menu, selected [About Screen Receiver].

---

## Status Bar



① Help text is displayed here (Windows only).

② Folder where captured data is stored

③ File name extension of captured data files

## 3. Using Screen Receiver

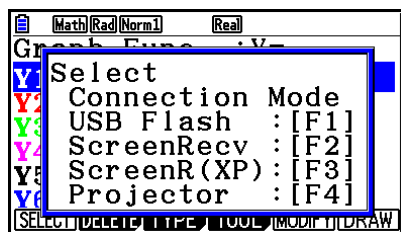
### 3-1 Establishing a Connection between Screen Receiver and a Calculator

#### Important!

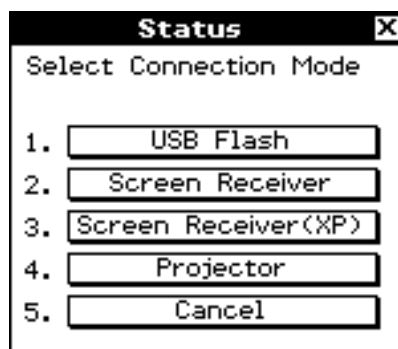
- Do not connect the calculator to the computer before starting up Screen Receiver. Start up Screen Receiver first.

1. Start up Screen Receiver.
2. Use a USB cable\* to connect the calculator to your computer.
  - This will display the dialog box shown below.

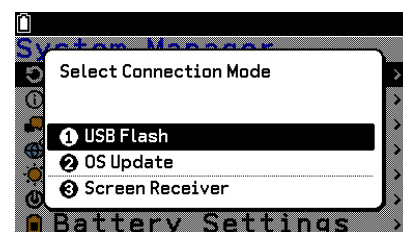
\* Use of a genuine CASIO USB cable is recommended. If your calculator comes with a USB cable, please use that cable. If you plan to use a commercially available USB cable, be sure to use a cable that can transfer data.



Type A Calculator



Type B or Type C Calculator



Type D Calculator

3. Type A Calculator (fx-CG10 Series, fx-CG20 Series, fx-CG50 Series, GRAPH90+ E):  
For Windows 8.1, Windows 10, Windows 11 users: press **F2**.  
For Windows XP users: press **F3**.  
For macOS users: press **F2**.

Type A Calculator (fx-9860GIII, fx-9750GIII, GRAPH35+ E II):  
For Windows 8.1, Windows 10, Windows 11 users: press **F3**.  
For macOS users: press **F3**.

Type B or Type C Calculator:

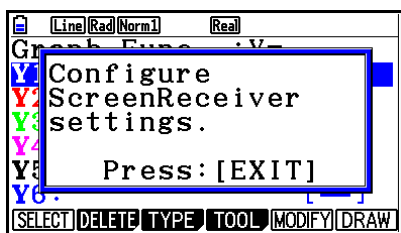
For Windows 8.1, Windows 10, Windows 11 users: tap [Screen Receiver], or press the **2** key.

For Windows XP users: tap [Screen Receiver(XP)], or press the **3** key.

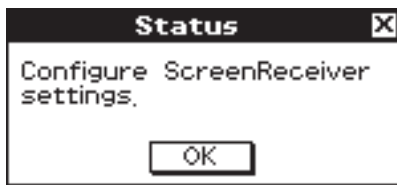
For macOS users: tap [Screen Receiver], or press the **2** key.

Type D Calculator:  
Select [Screen Receiver].

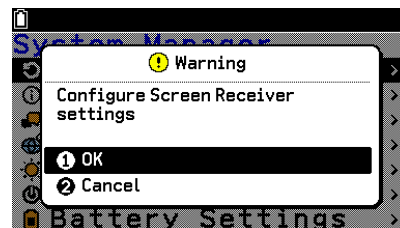
- This will display the dialog box shown below.



Type A Calculator



Type B or Type C Calculator



Type D Calculator

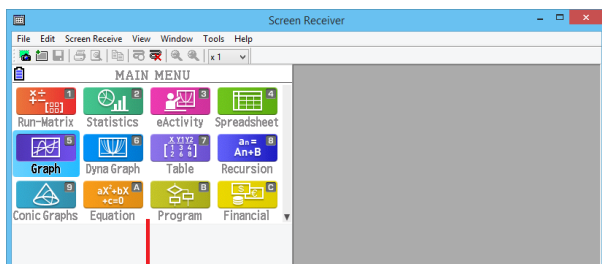
• **USB Connection Precautions**

A USB connection between the calculator and a computer may be terminated automatically if the computer enters a power save mode, sleep mode, or any other standby state. If this happens, disconnect and then reconnect the USB cable.

4. Type A Calculator: Press [EXIT].  
Type B or Type C Calculator: Tap [OK].  
Type D Calculator: Select [OK].

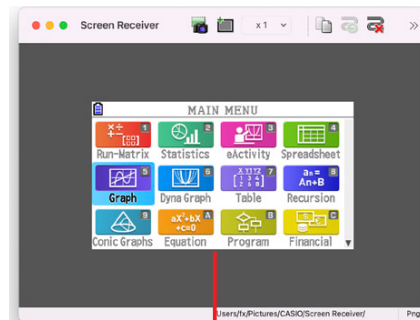
- This automatically establishes a connection between Screen Receiver and the calculator, and displays the calculator screen on the Screen Receiver window. Wait until the calculator screen appears on the Screen Receiver window before performing any calculator operation.

**Windows**




Calculator screen


**macOS**



Calculator screen

5. Perform the operations you want on the calculator.
- The calculator screen displayed by Screen Receiver will change in real time as you perform operations on the calculator.
6. To terminate the connection between Screen Receiver and calculator, click .
7. Disconnect the USB cable from the computer and calculator.


**Note**

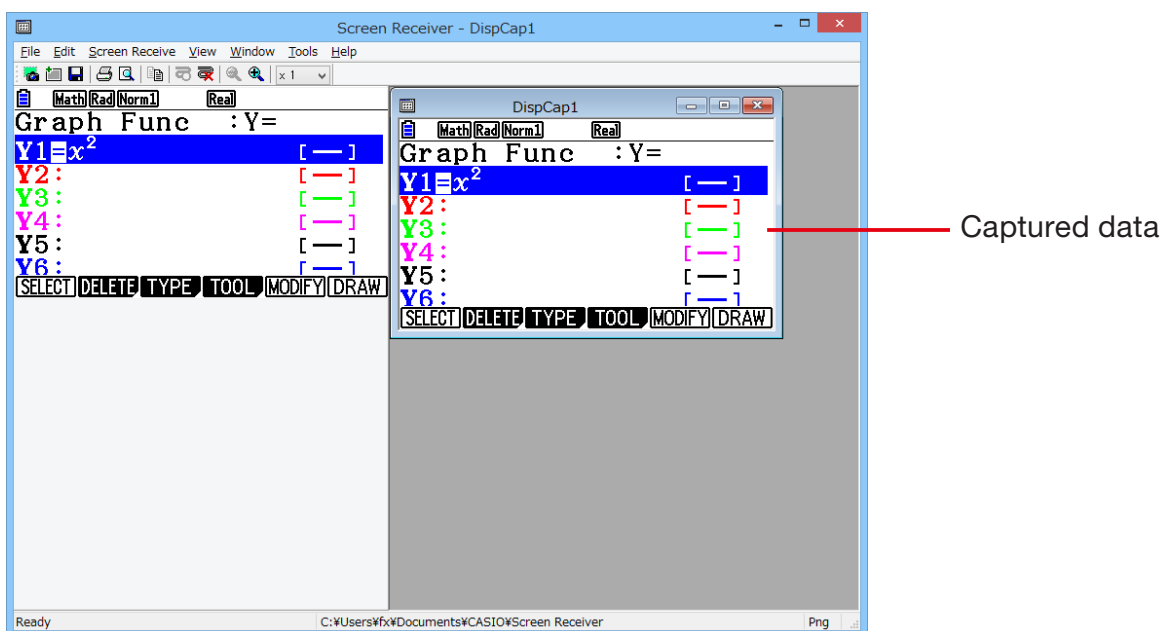
- If the connection between Screen Receiver and the calculator terminates for some reason, click  to reconnect.

## 3-2 Calculation Operation Precaution

- The way figures are drawn and the cursor moves on the Screen Receiver screen may not exactly match what appears on the calculator screen.
- The calculator does not support the operations below while there is a connection between the calculator and Screen Receiver.
  - File delete
  - Folder create or rename
  - Backup
  - Optimization
  - Reset operations
- Screen Receiver will not display the calculator screen while the calculator is performing a file save operation. The calculator screen will appear after the file save is complete.
- While in an Exam Mode on a Type D calculator, you cannot establish a connection between Screen Receiver and calculator. If you enter an Exam Mode on the calculator while a connection between Screen Receiver and calculator is established, the connection will be lost.


## 3-3 Capturing the Calculator Screen

1. Perform the required operation on the calculator to display the screen you want to capture.
2. Click .
  - This displays the captured data.



3. Repeat steps 1 and 2 to capture other screens, if you want.

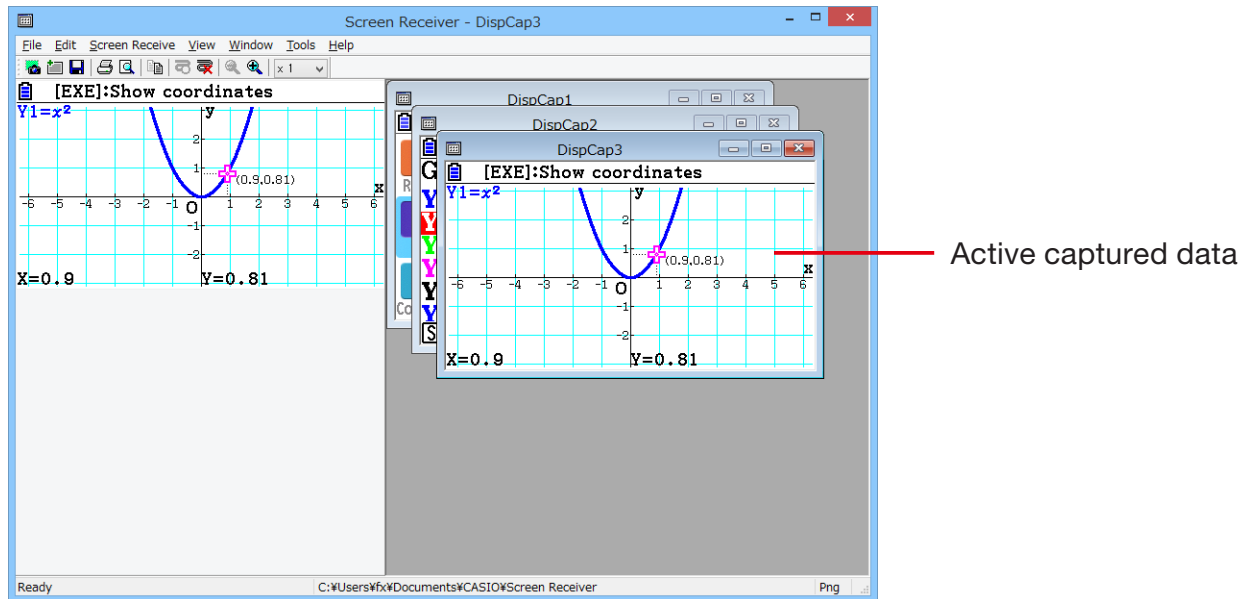
### Note

- You can put a frame around the captured data by clicking . Each click toggles between framed and unframed data. For more information, see "4-2 Capture Settings" (page E-25).

---

## 3-4 Making a Captured Data Window Active

Clicking a captured data window makes it the active window.

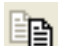


### Note

- Only one captured data window can be active at any time.
- To zoom, copy, save, or print the contents of a captured data window, you first must make it the active window.


---

## 3-5 Copying Captured Data Window Contents to the Clipboard

1. Make the captured data window that contains the data you want to copy the active window.
2. Click  to copy the captured data to the clipboard.

---

## 3-6 Saving Captured Data

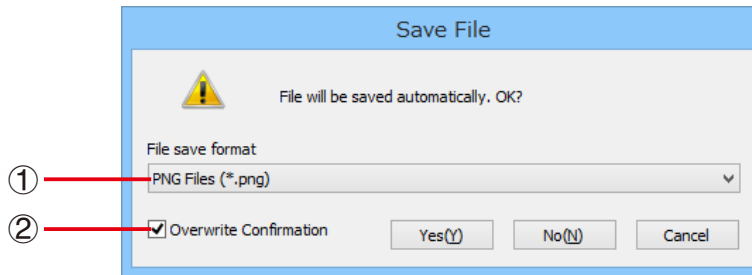
Make the window that contains the captured data you want to save the active window, and then click .

### Note

- Saved captured data is automatically assigned a file name of the following format: DispCapXX.XXX.
- The file format (bmp\*, jpg, png) and storage folder are in accordance with the settings described under “4-1 File Save Settings” (page E-25).
  - \* Windows only
- You can use the [Save As] command on the [File] menu to save the file under a different name.

## 3-7 Auto File Save

Attempting to exit Screen Receiver while there is unsaved captured data will cause the dialog box shown below to appear.

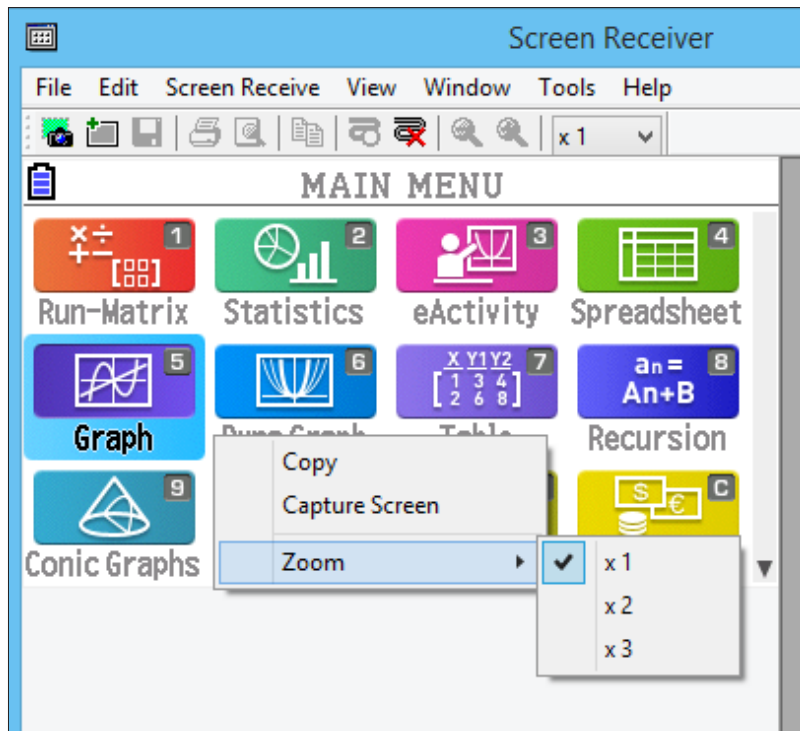


- ① Specifies the file format for the saved file. You can select bmp\*, jpg, or png.  
\* Windows only
- ② If there is already a file with the same name that you specify, this option specifies whether or not the older version should be overwritten with the new one.

## 3-8 Resizing a Screen Image

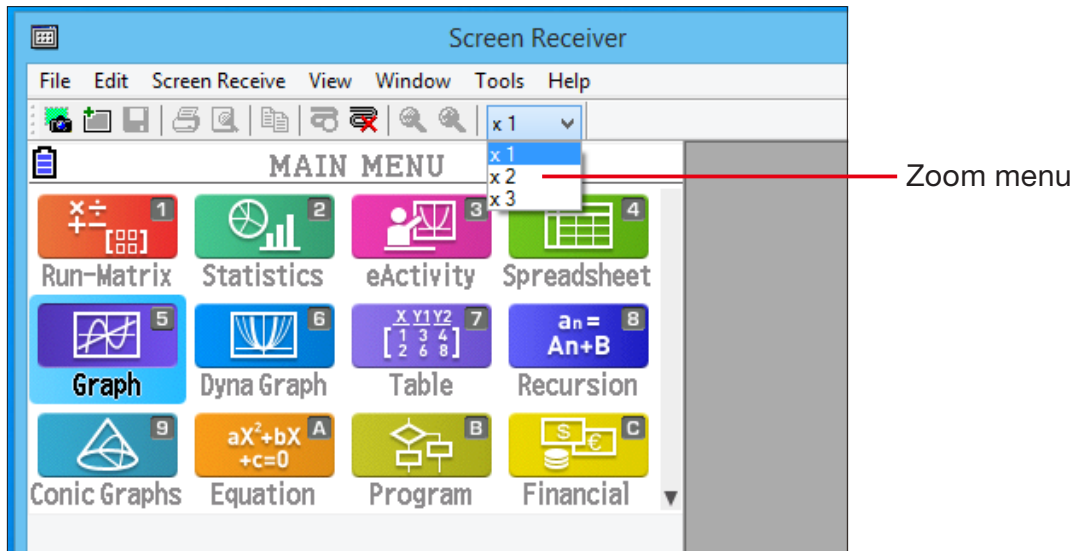
### To resize the calculator screen

Right-click the calculator screen. Click [Zoom] on the shortcut menu that appears and then select a zoom factor.





## To resize the calculator screen when capturing it

On the toolbar, click the down arrow button of the zoom box. On the menu that appears, select a zoom factor.



## To resize captured data

Make the window that contains the captured data you want to resize the active window, and then click  or . You can select one of three sizes.



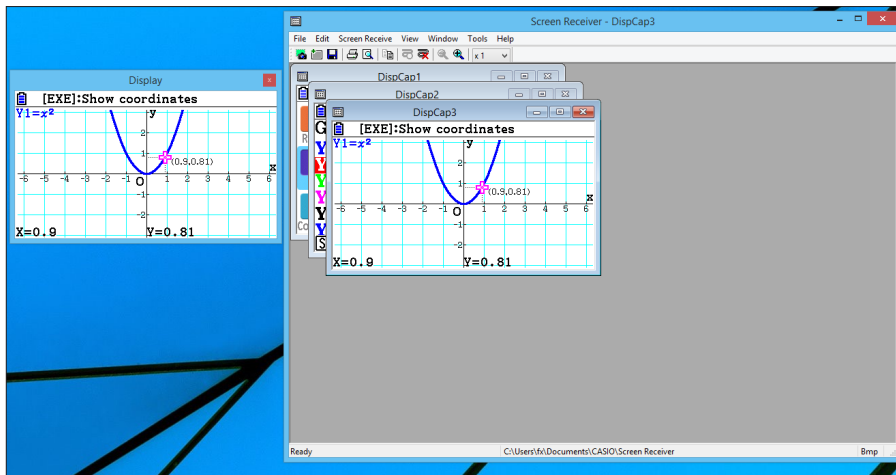
You also can resize by selecting a zoom factor with the [Zoom] command on the [View] menu.

## 3-9 Using a Floating Calculator Screen (Windows only)

You can display the calculator screen in its own window that is separate from the Screen Receiver window.

### To make the calculator screen a floating screen

1. Double-click the calculator screen.
2. Drag the calculator screen to the location you want, either inside or outside of the Screen Receiver window.



### To return a floating calculator screen to the Screen Receiver window

- Double-click the floating calculator screen.
- Drag the calculator screen back to the left side of the Screen Receiver window.

#### **Important!**

- You can return a floating calculator screen only to the left side of the Screen Receiver window. Dragging top, bottom, or right side of the main window will not work.

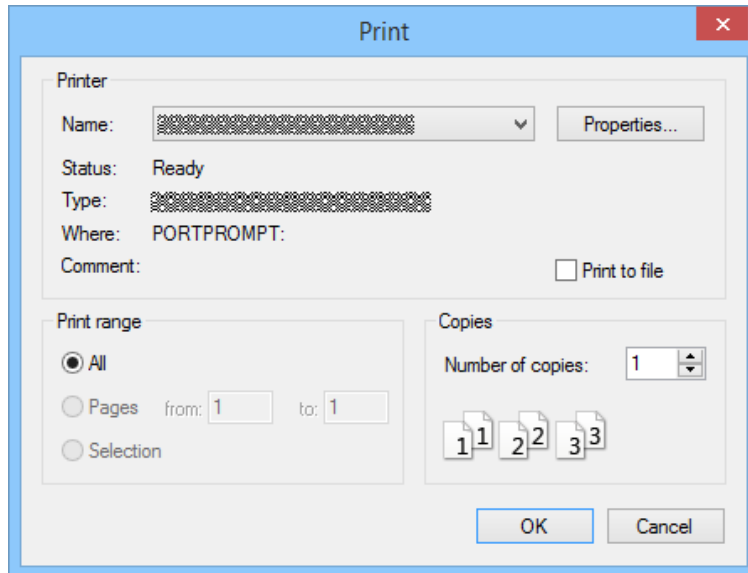
---

## 3-10 Printing

- You can print the contents of a captured data window, if you want.

1. Make the captured data window that contains the data you want to print the active window.

2. Click . This will display the Print dialog box.



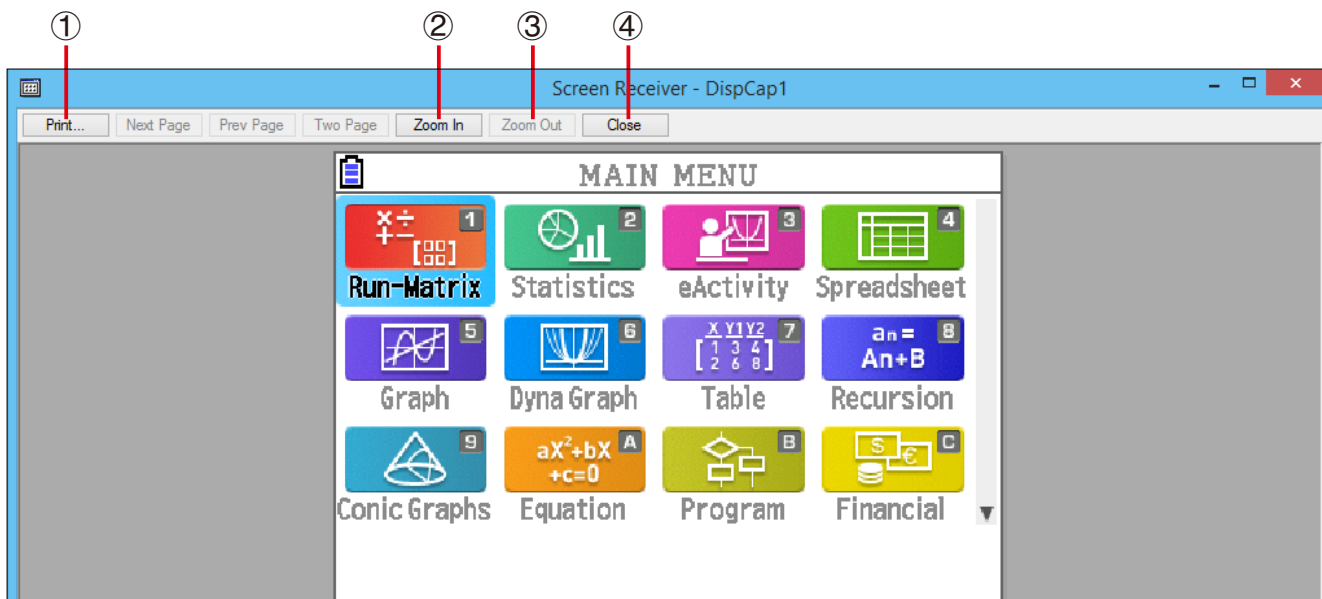
3. Click [OK] to start printing.

### **Important!**

- Only the contents of the currently active captured data window can be printed. You cannot print the contents of multiple captured data windows with a single print operation.
- Images are printed in accordance with width setting of the paper size selected on the Print dialog box.

## ■ Print Preview (Windows only)

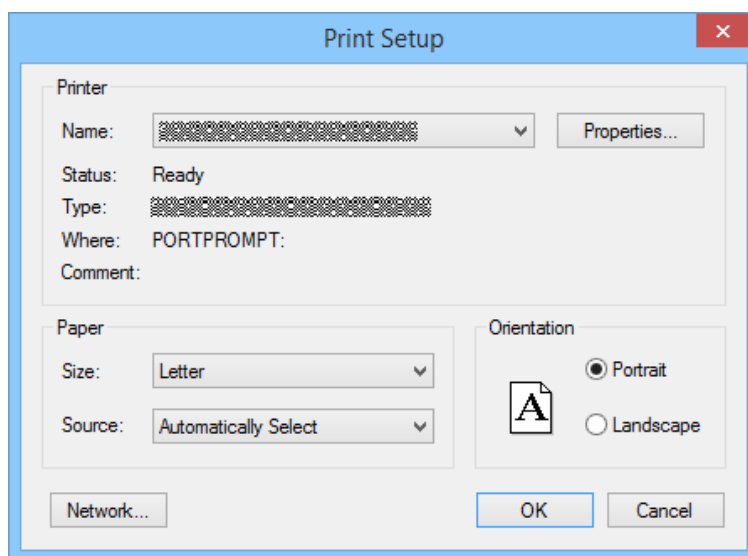
- Click  to display the print preview window.



- ① Displays the Print dialog box.
- ② Enlarges the preview image.
- ③ Reduces the size of the preview image.
- ④ Closes the print preview window image.

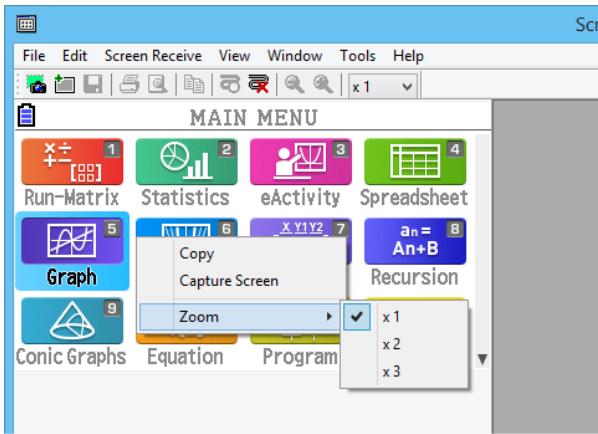
## ■ Print Setup Dialog Box

- Selecting [Print Setup] on the [File] menu displays the Print Setup dialog box.

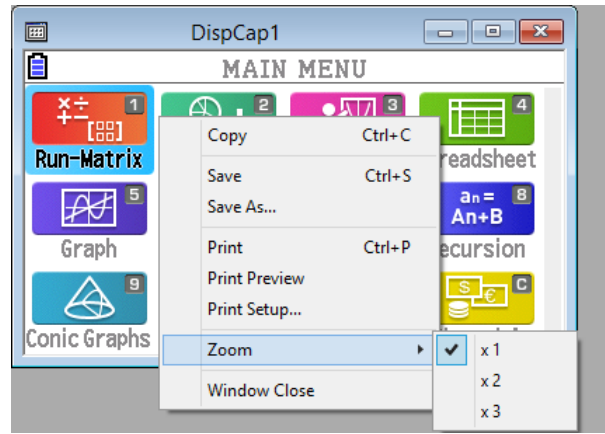


### 3-11 Shortcut Menu

On the calculator screen or captured data window, right-clicking with your mouse (Windows) or performing a control+click (macOS) will cause the shortcut menu shown below to appear.



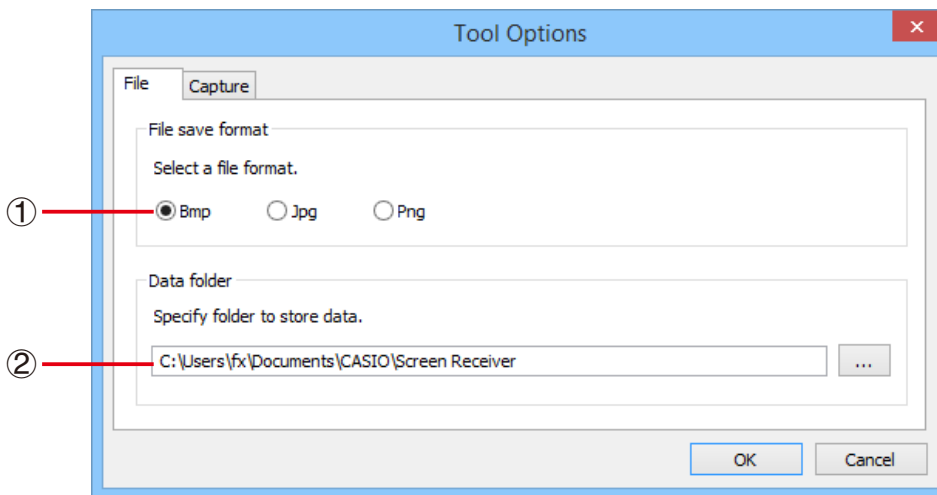
Calculator screen



Captured data

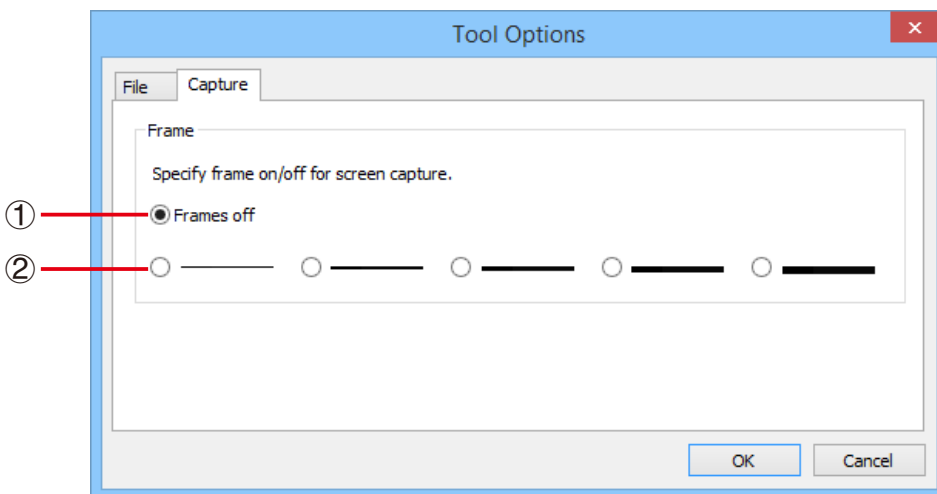
# 4. Tool Options Dialog Box

## 4-1 File Save Settings



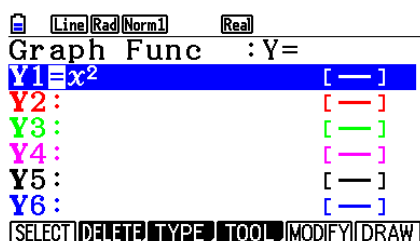
- ① File name extension of captured data files  
Bmp: Windows only
- ② Storage folder

## 4-2 Capture Settings

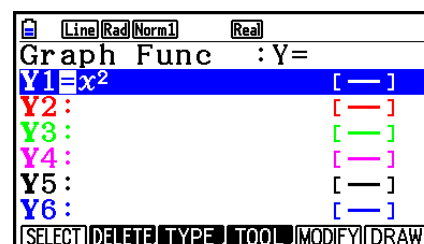


- ① Specifies unframed captured screen images
- ② Specifies framed captured screen images, and frame thickness.

Captured data example



Unframed



Framed

## 5. Error Message Table

Message	Description	Required Action
<p>A problem occurred while writing file &lt;file name&gt;. The disk being written to may be damaged or may not exist. Check the disk and try again.</p>	<p>A problem occurred while writing to a disk.</p>	<p>Check the disk for data corruption and confirm that the disk exists. Then try again.</p>
<p>A problem occurred while launching the manual (***.pdf) viewer. Download the viewer from the site below and reinstall it. <a href="http://get.adobe.com/reader/otherversions/">http://get.adobe.com/reader/otherversions/</a></p>	<p>A problem occurred during manual viewer startup.</p>	<p>Download and install a new viewer from <a href="http://get.adobe.com/reader/otherversions/">http://get.adobe.com/reader/otherversions/</a>.</p>
<p>The path and/or filename exceeds the maximum length allowed by your <u>Windows</u>* operating system.</p>	<p>The number of letters in the path or file name you specified exceeds the allowable limit.</p>	<p>Shorten the specified path or file name.</p>
<p>A connection could not be established. Either the calculator is not connected or the connected calculator is not in the Screen Receiver Mode. Correct the problem and try again. For details, select the following on the menu bar: Help - Manual, or refer to the Screen Receiver user's guide.</p>	<p>You started a data communication operation while the USB cable was not connected.</p>	<p>Check for proper connection of the calculator to the computer. Then try again. See "3. Using Screen Receiver" for details.</p>
<p>A problem occurred during communication. Disconnect the USB cable, check the setup of the calculator, and try again. For details, select the following on the menu bar: Help - Manual, or refer to the Screen Receiver user's guide.</p>	<p>Some problem occurred during data communication.</p>	<p>Disconnect the USB cable and check the setup of the calculation. Then try again. See "3. Using Screen Receiver" for details.</p>

Message	Description	Required Action
<p>The image could not be sent from the calculator.</p> <p>(1) Try pressing a key on the calculator.</p> <p>(2) Check to make sure that the calculator is in the Screen Receiver Mode.</p> <p>If the screen is not sent after you perform the above steps, disconnect the USB cable and check the calculator setup. Next, reconnect and try again.</p> <p>For details, select the following on the menu bar: Help - Manual, or refer to the Screen Receiver user's guide.</p>	<p>The calculator screen image cannot be sent for some reason.</p>	<p>Follow the steps that are shown on the display and try again.</p> <p>See "3. Using Screen Receiver" for details.</p>
<p>The connection has been broken for some reason and is being restored.</p> <p>If data communication does not resume after some time, perform the operation described below.</p> <p>Try pressing a key on the calculator. If the screen is not sent after you perform the above steps, disconnect the USB cable and check the calculator setup. Next, reconnect and try again.</p> <p>For details, select the following on the menu bar: Help - Manual, or refer to the Screen Receiver user's guide.</p>	<p>—</p>	<p>Follow the steps that are shown on the display and try again.</p>
<p>The application is already running.</p> <p>Another user may already be using the application.</p>	<p>Another user is running Screen Receiver.</p>	<p>Wait until the other user shuts down Screen Receiver.</p>

\* macOS: Mac

**CASIO®**

**CASIO COMPUTER CO., LTD.**

6-2, Hon-machi 1-chome  
Shibuya-ku, Tokyo 151-8543, Japan