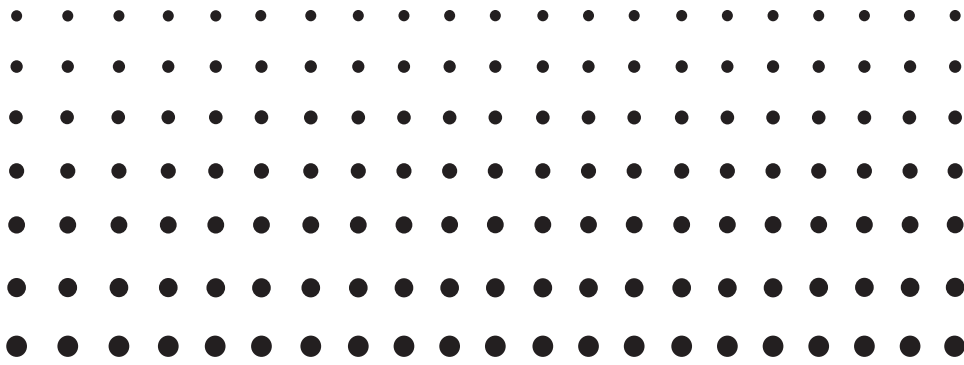


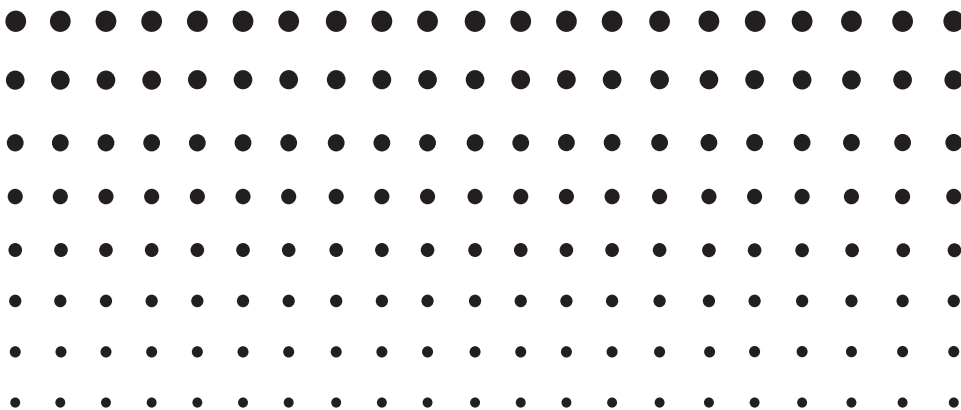
**For ClassPad Series**

E



# *Screen Capture*

## *User's Guide*



CASIO Education website URL

<http://edu.casio.com>

ClassPad website URL

<http://edu.casio.com/products/classpad/>

ClassPad register URL

<http://edu.casio.com/dl/>

**CASIO®**

**Note**

Display examples shown in this User's Guide are intended for illustrative purposes only. The actual text and values that appear on the display may differ from the examples shown in this User's Guide.

# Introduction

- Screen Capture provides the following functions.
  - Display of ClassPad screen images on a computer connected via a USB cable
  - Display of screen capture images in the application on your computer that is associated with bmp image files
  - 160-dot × 240-dot monochrome screen images
  - Display of all ClassPad application screens and icon menu screens on your computer, except under the following conditions.
    - While a calculation is in progress
    - While another data communication function is operating
    - Any state during which the ClassPad does not accept input from its keyboard
  - Screen zooming
  - Screen area framing
- The screen shots shown in this manual are all from the English version of Windows® XP. Note that the actual appearance of the screen displayed by this software depends on your computer system setup and on the operating system you are using.

## ***Important!***

- Be sure to install Screen Capture before connecting the ClassPad unit to your computer. Connecting before installing Screen Capture creates the risk of unstable operation.

## ***Note***

- Use the USB cable that comes with the ClassPad to connect to your computer. Use of a commercially available USB cable is not supported.

## System Requirements

Operating Systems: Windows® XP Home Edition (SP3 or later), Windows® XP Professional (32-bit) (SP3 or later), Windows Vista® (32-bit), Windows® 7 (32-bit/64-bit)  
Your hardware configuration needs higher than functionalities that operating system recommends.

Computer: IBM PC/AT or compatible computer  
Computer with one of the Windows® operating systems pre-installed (Excluding computers with an upgraded operating system and self-built computers.)

Disk Space: 100MB for installation and uninstall

Note: Actual requirements and product functionality may vary based on your system configuration and operating system.

Other: USB port for direct connection. Do not connect via a USB hub.  
Video adapter and display must support resolution of XGA (1024x768) or higher, 16 bit or higher system color.  
CD-ROM drive  
Adobe® Reader® 6.0 or later.

### **Note**

- Windows is a registered trademark or trademark of Microsoft Corporation in the United States and/or other countries.
- Company and product names used herein are trademarks of their respective owners.

# Contents

<b>1 Installing and Uninstalling Screen Capture .....</b>	<b>E-4</b>
To install Screen Capture .....	E-4
To uninstall Screen Capture .....	E-7
To start up Screen Capture .....	E-8
To install the ClassPad USB driver on your computer.....	E-8
<b>2 Using Screen Capture .....</b>	<b>E-10</b>
To configure ClassPad settings .....	E-10
To perform Screen Capture operations .....	E-11
About screen image data .....	E-12
To configure Screen Capture settings .....	E-12
Help.....	E-12

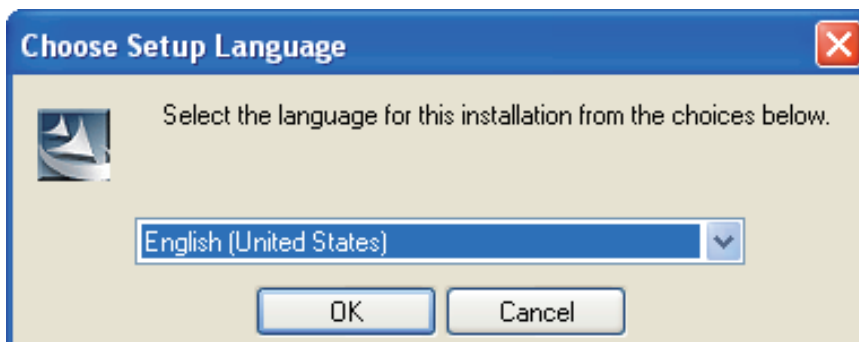
# 1 Installing and Uninstalling Screen Capture

## Note

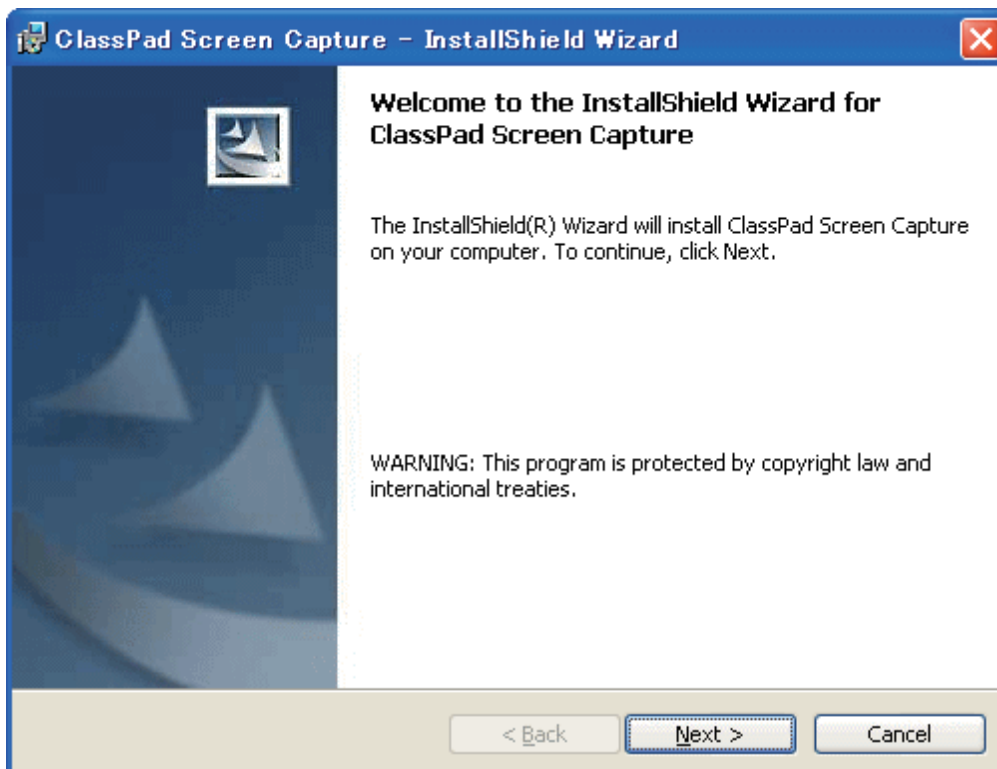
- Do not install Screen Capture into a folder that is used by other software.

## ■ To install Screen Capture

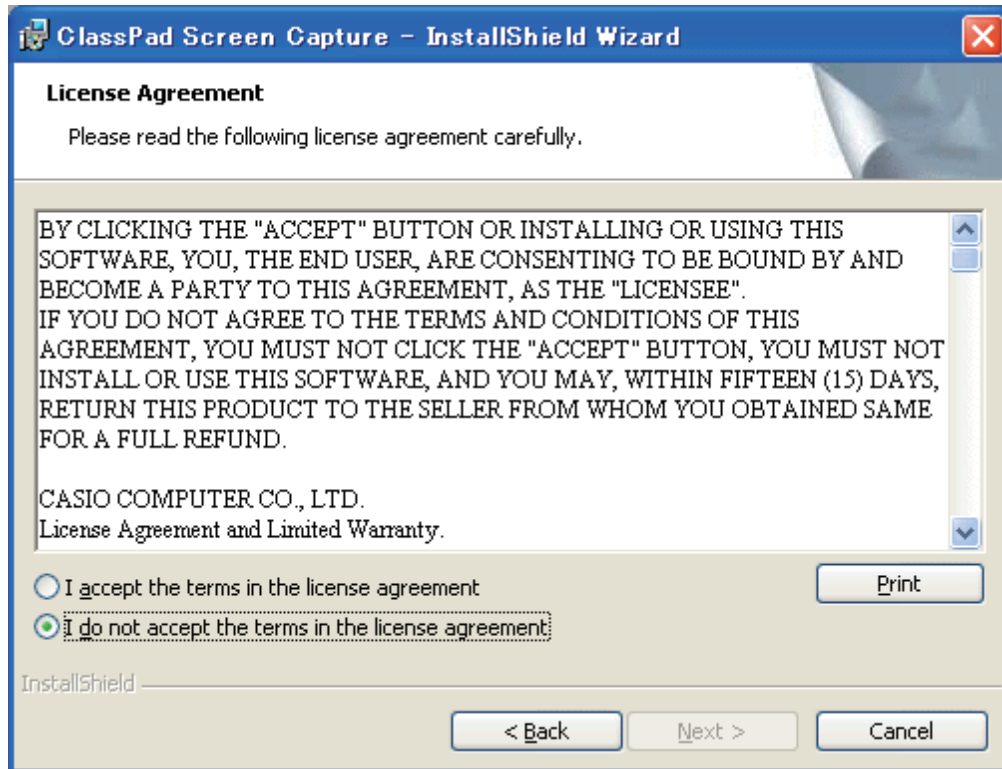
1. Place the bundled CD-ROM into your computer's CD-ROM drive.
2. On the menu that appears, click "Screen Capture", and then click "INSTALL".
3. Choose the language you want for the Screen Capture manual installed with Screen Capture.



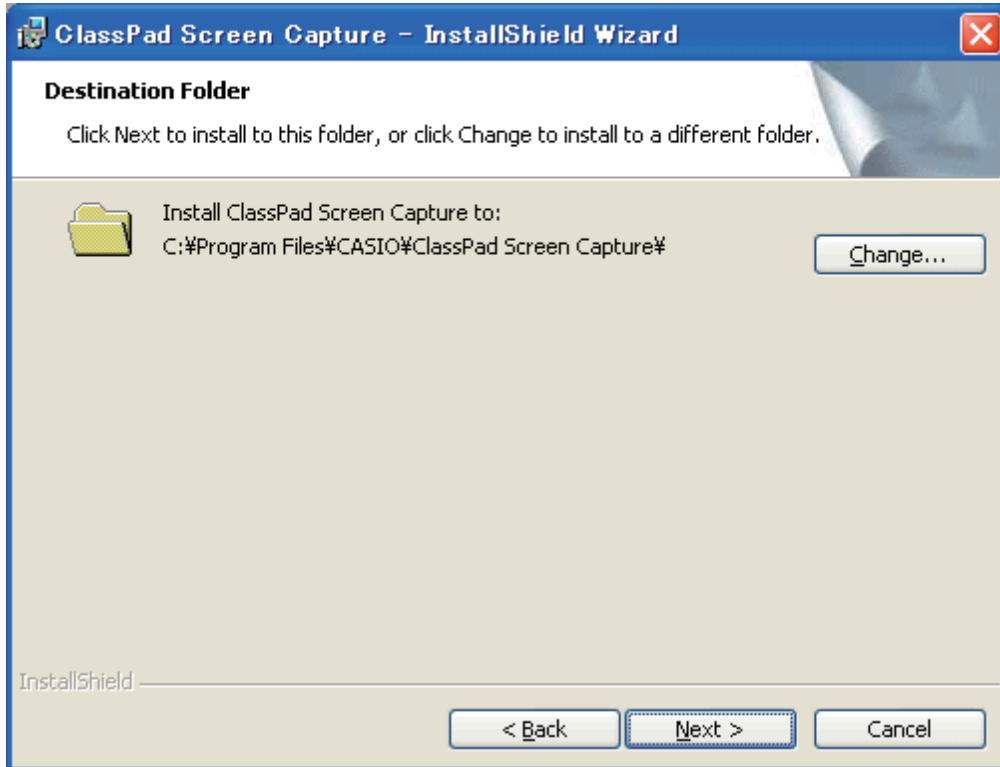
4. Click [OK] and then [Next].



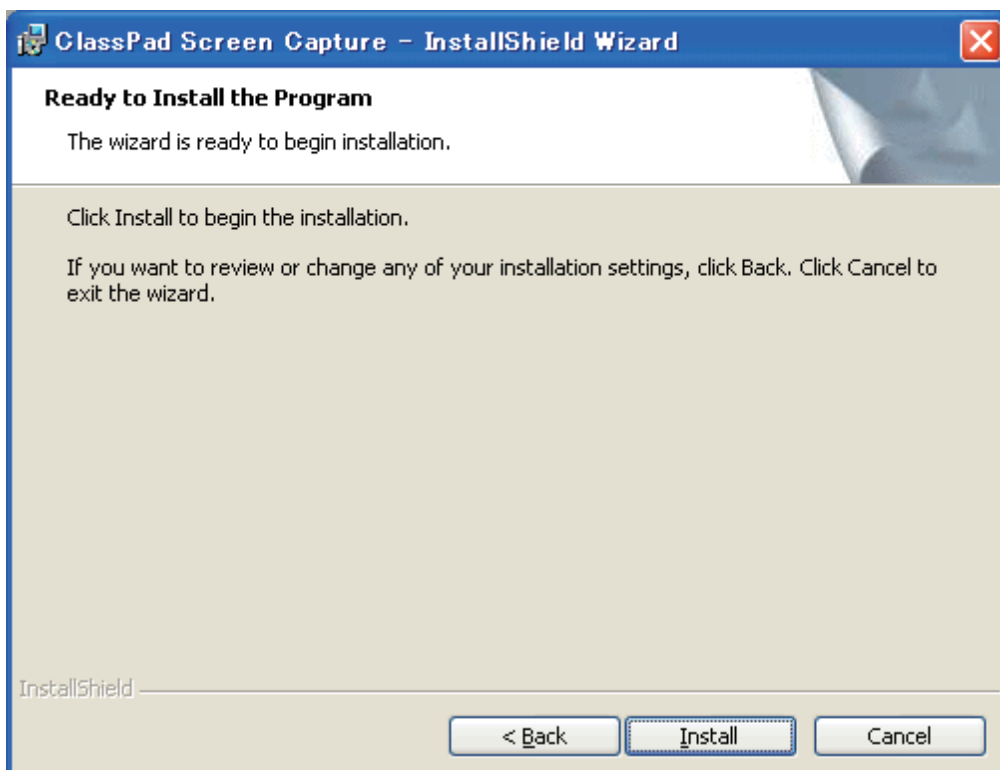
5. Carefully read the terms and conditions of the license agreement. If you agree to be bound by the terms and conditions of the license agreement, choose “I accept the terms in the license agreement” and then click the [Next] button.
- If you do not agree to be bound by the terms and conditions of the license agreement click “I do not accept the terms in the license agreement” and then click the [Cancel] button to exit the install procedure.



6. Choose one of these options to specify the drive and folder where you want to install Screen Capture.
- To use the default setting, simply click the [Next] button.
  - To choose a different folder, click the [Change...] button. Specify the folder you want and then click the [Next] button.

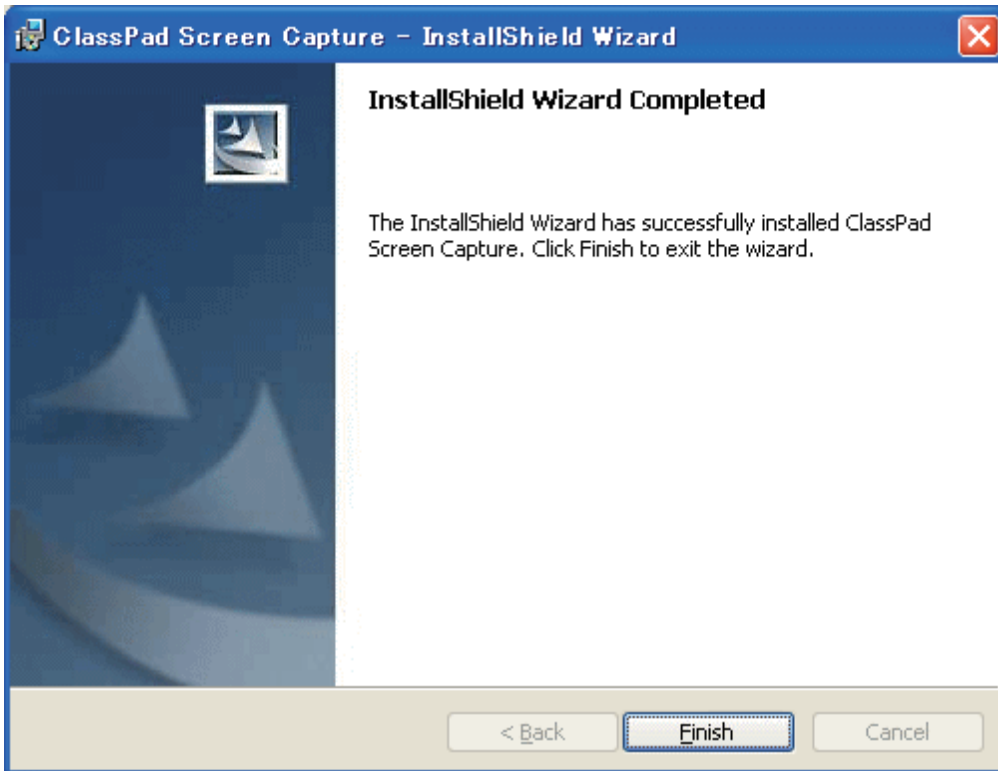


7. Click the [Install] button to start installation.





8. On the screen that appears after installation is complete, click the [Finish] button.
  - This finalizes the installation of the software on your computer.



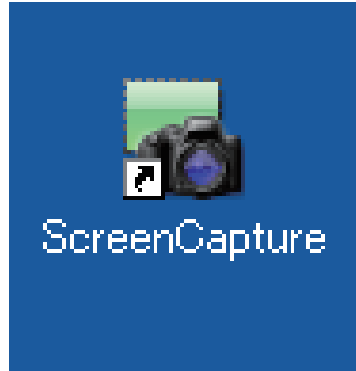
### ■ To uninstall Screen Capture

1. Display the Windows Control Panel.
2. Click [Add/Remove Programs].
3. On the list of applications that appears, select "ClassPad Screen Capture".
4. Click the [Add/Remove] button.
  - This will display the program maintenance wizard.
5. Click the [Yes] button.
  - This completes the uninstall operation.

## ■ To start up Screen Capture

1. On the desktop of your computer, double-click “Screen Capture”.

- You could also start up the Screen Capture by clicking [Start] - [Program] - [CASIO] - [ClassPad Screen Capture] - [ClassPad Screen Capture].

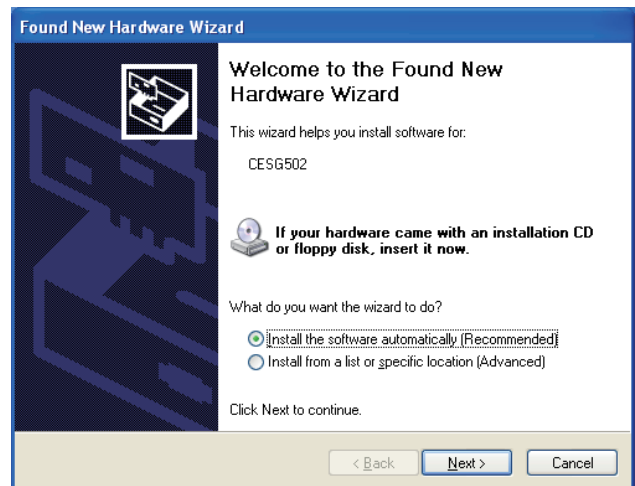


## ■ To install the ClassPad USB driver on your computer

This step is necessary only if the Found New Hardware Wizard dialog box appears when you connected the ClassPad to your computer.



Select “No, not this time”.

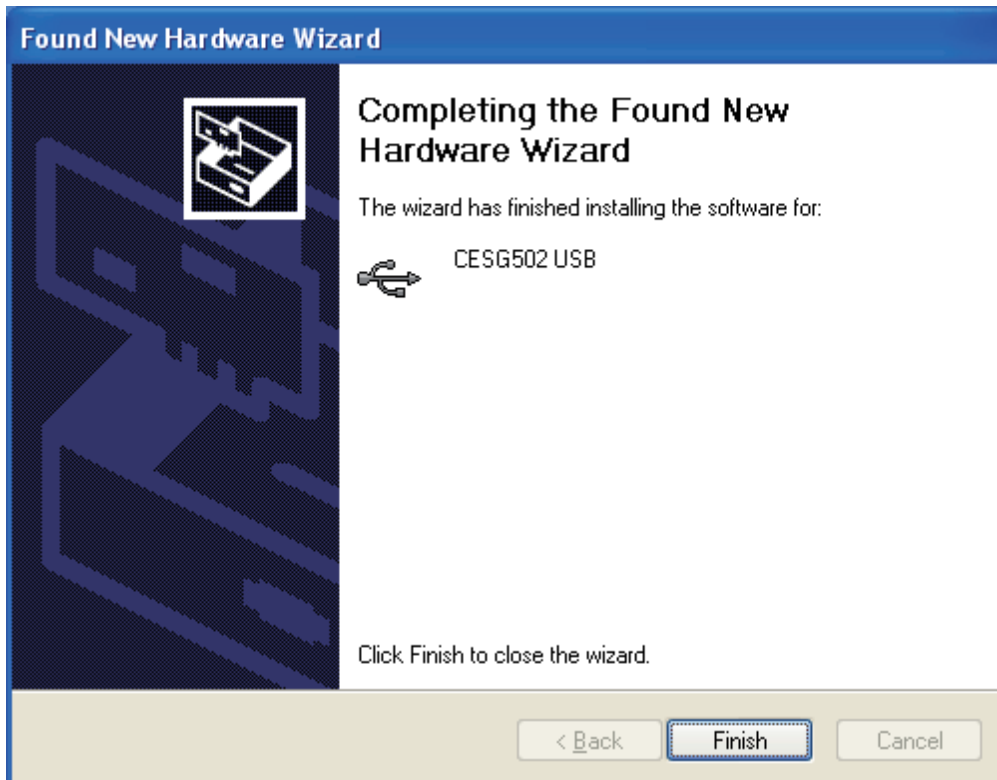


This screen is different on Windows Vista®/Windows® 7.

1. Select “Install the software automatically (Recommended)” and then click [Next].




2. Though a message appears to let you know that the software has not passed the “Windows Logo Test”, there is no need for concern. Simply click [Continue Anyway] and proceed with installation.



3. After installation of the USB driver is complete, click [Finish].

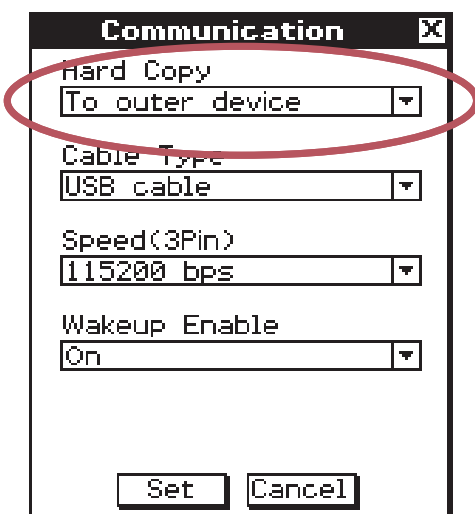
## 2 Using Screen Capture

### ■ To configure ClassPad settings

1. On the application menu, tap .
  - This will start up the Communication application.
2. Tap [Setup] and then [Open Setup Menu].
  - This displays the Communication dialog box.
3. Configure the settings described below.

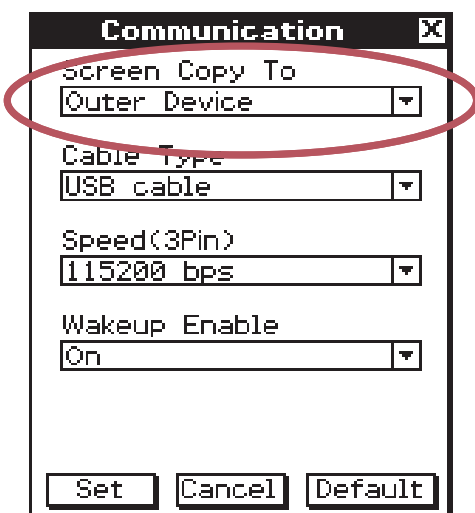
<ClassPad OS: 1.00 to 2.20>

Select “To outer device” for the “Hard Copy” setting.



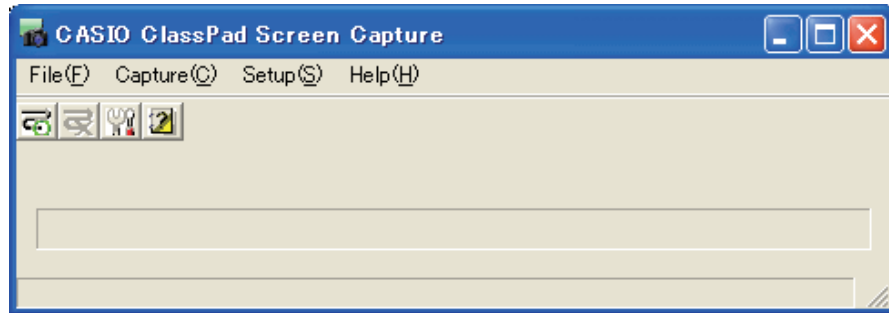
<ClassPad OS: 3.00 or greater>

Select “Outer Device” for the “Screen Copy To” setting.



## ■ To perform Screen Capture operations

1. Start up Screen Capture.

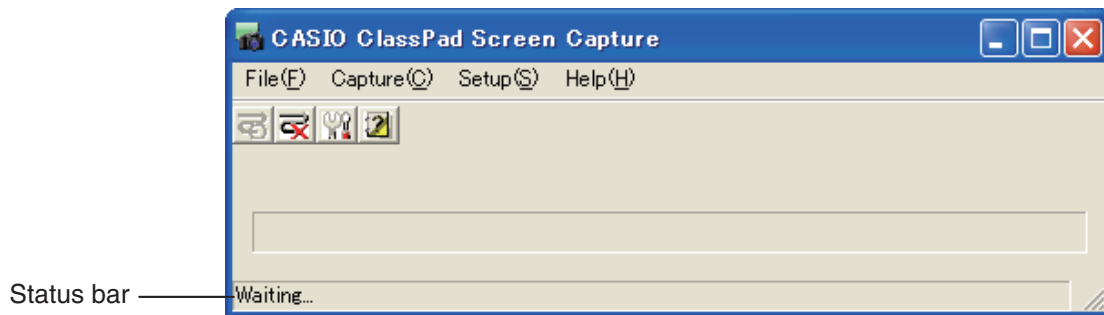


2. Use the USB cable that comes with the ClassPad unit to connect to your computer.

- If you have “On” selected for the “Wakeup Enable” setting, the ClassPad will enter a standby state. To exit the standby state, press the **clear** key.

3. On the [Capture] menu, select [Start], or click the  button.

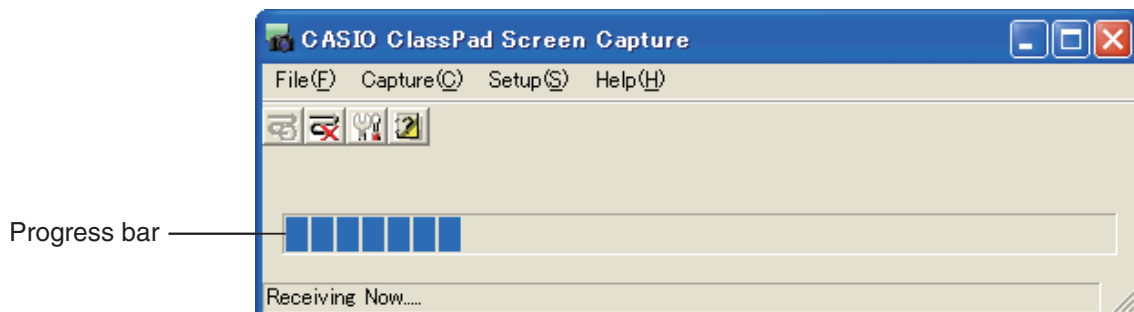
- This will cause “Waiting...” to appear in the status bar.



4. Perform the required operation on the ClassPad unit to produce the screen you want to display on your computer.

5. On the ClassPad, tap the  icon.


- This will send the screen data from the ClassPad to the connected computer.
- A progress bar on the Screen Capture window will indicate the progress of the data transfer.



6. After transfer if the screen image data is complete, the application on your computer that is associated with bmp image files will start up automatically and display the screen image.

- Perform the required operations with the application to save the screen data, if you want.


7. Repeat steps 4 through 6 to transfer and save other screen image data, if you want.

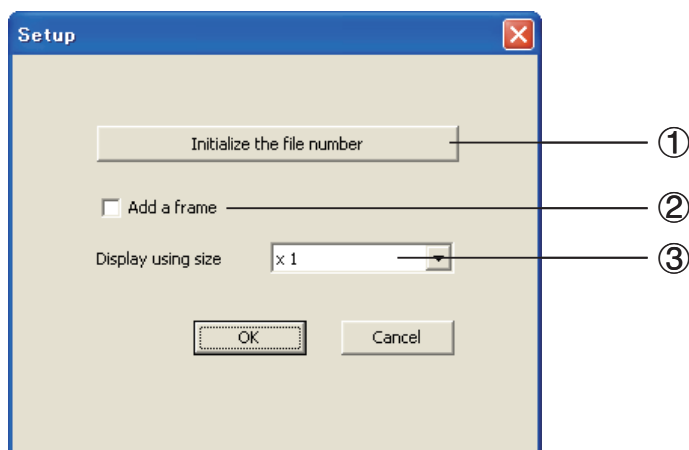
- To interrupt an ongoing screen image data transfer operation, select [Stop] on the [Capture] menu, or click the  button.
- To exit Screen Capture, select [Close] on the [File] menu.

### ■ About screen image data

- Each received screen image is automatically assigned a name with the format “Imagennn.bmp”.
- “*nnn*” is a sequential file number starting from 001. The file number is incremented by 1 as each screen image is received. Screen Capture remembers the last image number assigned, even when you exit the application.

### ■ To configure Screen Capture settings


- Click the [Setup] menu or the  button.
  - This will display the Setup dialog box.



- Resets the file number (*nnn*) to 001.
- Select the check box to add a frame to the screen data.
- Specifies the size of the screen data. You can select a size of x1 (actual size), x2 (double size), or x3 (triple size).

- After you finish configuring settings, click [OK].

### ■ Help

- On the [Help] menu, select [Help], or click the  button.
- Start up Adobe Reader to view the Screen Capture User's Guide.

**CASIO®**

**CASIO COMPUTER CO., LTD.**

6-2, Hon-machi 1-chome  
Shibuya-ku, Tokyo 151-8543, Japan